



SAILING INSTRUCTIONS

INSHORE CIRCLES 1, 2, & 3

Charleston Race Week at Patriots Point - April 10-13, 2025

Organizing Authority: CRW Events, LLC

www.charlestonraceweek.com

The notation '[NP]' denotes that a breach of this rule will not be grounds for protest by a boat. This change is added to RRS 60.1.

1 RULES

1.1 The event is governed by the rules as defined in *The Racing Rules of Sailing* (RRS), the ORC Rules (www.orc.org) and the Charleston Race Week (CRW) PHRF Policies and Procedures, which are posted under documents on the Official Notice Board ([ONB](#)).

1.2 Appendix V, Alternative Penalties, will apply.

1.3 Appendix T, Arbitration, will apply.

1.4 The Vakaros RaceSense system will be used by the race committee (RC) for the J 70, Melges 24 and VX One Classes (see "Attachment 1".) This changes RRS 26, 29.1, 30, 41(c) and Race Signals.

2 SAFETY [DP]

2.1 The RC will make daily announcements before racing and at the end of racing on the circle's VHF channel regarding vessel traffic and other pertinent information. Boats are reminded that Charleston Harbor and its approaches have a high level of commercial traffic. (See SI 21 Commercial Traffic.)

2.2 When transiting to the race area from Patriots Point in Charleston Harbor, boats are advised to leave G29 to starboard. Passing between G29 and Castle Pinckney is not recommended.

2.3 A boat that withdraws from a race, leaves the course area or returns to the course area between races shall notify the RC as soon as possible. Failure to do so may result in protest.

3 COMMUNICATION

3.1 Notices to competitors will be posted online on the event [ONB](#).

3.2 Any questions concerning the notice of race, these SIs, or any other issue shall be submitted to the RC at info@charlestonraceweek.com. All inquiries and responses will be posted on the [ONB](#).

3.3 The designated VHF channels for each circle are as follows:

| | |
|----------|-------------------------|
| Circle 1 | VHF Channel 1066 or 66A |
| Circle 2 | VHF Channel 69 |
| Circle 3 | VHF Channel 71 |

3.4 The RC for Circles 1, 2 and 3 will broadcast their intentions for racing each day on the designated VHF Channel at 0930 and 1000.

3.5 From the first warning signal until the end of the last race of the day, except in an emergency, a boat shall not make voice or data transmissions and shall not receive voice or data communication that is not available to all boats.

4 CHANGES TO SAILING INSTRUCTIONS

4.1 Any shoreside change to the SIs will be posted on the ONB before 0900 on the day it will take effect, except that any change to the schedule of races will be posted by 2000 on the day before it will take place.

4.2 For an on-the-water change to the sailing instructions, in accordance with RRS 90.2(c): "L" (Lima) flag shall be displayed with the class flag, if appropriate, and will be followed by a broadcast hail of the change on the designated VHF channel.

5 SIGNALS MADE ASHORE

5.1 Signals made ashore will be posted and displayed on the [ONB](#).

5.2 When flag "AP" is displayed ashore, "1 minute" is replaced with "not less than 30 minutes" in the race signal AP. This changes RRS Race Signals.

6 SCHEDULE OF RACES & EVENTS

Thursday, April 10

1200-1700 Registration packet pickup at the tent north of Museum
1730-1800 Skippers' Meeting in the Theater aboard USS Yorktown
1800-2100 Opening Party

Friday, April 11

1100 Inshore (Circles 1, 2, & 3) - First warning signal
1800-2100 Daily Awards, Race Debrief and Post Race Party aboard USS Yorktown

Saturday, April 12

1100 Inshore (Circles 1, 2 & 3) - First warning signal
1800-2100 Daily Awards, Race Debrief and Post Race Party aboard USS Yorktown

Sunday, April 13

1100 Inshore (Circles 1, 2 & 3) - First warning signal
1400 No warning after

1600-1800 Awards Ceremony aboard USS Yorktown

6.1 The event venue is aboard the USS Yorktown.

6.2 The RC will run a maximum of ten (10) races.

6.3 Except for the VX One Class, the RC intends to run three (3) races per day. One (1) extra race per day may be sailed, solely at the discretion of the RC.

6.4 The VX One Class ONLY: The RC intends to run multiple races per day.

7 CLASS FLAGS, BOW NUMBERS & SAIL NUMBERS [NP][DP]

7.1 Some classes will be assigned bow numbers. These bow numbers shall be displayed on both sides of the bow.

7.2 Bow numbers shall be attached to both sides of the boat's hull at all times while racing and shall be mounted approximately 2-4 inches below deck level and 6-8 inches aft of the bow. Boats failing to display bow numbers may be subject to protest by the RC.

7.3 Boats shall display only the sail numbers under which she has entered, unless prior approval is obtained from the RC and posted on the [ONB](#).

| Circle 1: | Circle 2: | Circle 3: |
|--------------------|-------------------|------------------------|
| J/24 - Pink | J/70 - White | ORC D - Yellow |
| Melges 20 - Yellow | Melges 24 - Green | J/105 - Purple |
| PHRF - White | VX One - Yellow | J/88 - Pink |
| J/22 - Neon Green | | Melges 32 - Dark Green |

8 RACING AREA

8.1 The racing areas are shown in Circle Locations in "Illustration A."

9 COURSES

9.1 The diagrams in "Illustration A" detail the courses, including the approximate angle between legs, the order in which the marks are to be passed and the side on which marks are to be left.

9.2 The course to be sailed will be posted on the RC signal vessel at or before the warning signal.

9.3 The bearing and distance to the first mark will be displayed on the signal vessel at or before the warning signal.

9.4 If one of the leeward gate marks is missing, boats shall leave the remaining leeward mark to port.

9.5 The RC may broadcast the course description, bearing and distance to the first mark or report other visual signals by VHF. Information broadcast by the RC is provided as a courtesy only. Errors or omissions in the courtesy broadcasts will not be grounds for granting redress. This supplements RRS 61.1(a) and 61.4(b)(1).

10 MARKS

10.1

| | Circle 1: | Circle 2: | Circle 3: |
|---------------------|----------------|-----------------|---------------|
| Mark 1 | Yellow Tetra | Green Tetra | Orange Tetra |
| Mark 0 (offset) | Orange Ball | Orange Ball | White Ball |
| Marks 2S/2P | Yellow Tetras | Green Cylinders | Orange Tetras |
| Start/Finish Marks | RC Vessels | RC Vessels | RC Vessels |
| Start Pin, if used | Green Cylinder | Orange Cylinder | Yellow Tetra |
| Finish Pin, if used | White Ball | Yellow Tetra | White Ball |
| Change Mark | Orange Tetra | Red Tetra | Yellow Tetra |

11 CHECK IN [NP][DP]

11.1 Each day before the warning signal of the first race in which she intends to start, each boat shall sail past the stern of the RC signal vessel and check-in by hailing her sail or bow number. Boats shall continue to do so until acknowledged by the RC.

11.2 Boats failing to comply with SI 11.1 will receive a 20% scoring penalty, calculated as stated in rule 44.3(c), without a hearing. The penalty will apply to the boat's first race of the day.

12 THE START

- 12.1** The starting line will be between the staffs displaying orange flags on the starting marks. If the port end mark vessel is not on station, it will be replaced by an inflatable mark. The course side of the inflatable mark will define the port end of the line.
- 12.2** The orange starting line flag will be displayed with one sound at least five minutes before a warning signal to alert boats that a race or sequence of races will begin soon.
- 12.3** Boats whose warning signal has not been made shall avoid the starting area during the starting sequence for other races.
- 12.4** A boat that does not start within 4 minutes after her starting signal will be scored Did Not Start (DNS) without a hearing. This supplements RRS A4 and A5.2.
- 12.5** For the J 70, Melges 24 and VX One Classes ONLY an automated start system will be used which is outlined in "Attachment 1." This changes RRS 26, 29.1, 30, 41(c) and Race Signals.

13 RECALLS

- 13.1** The RC will attempt to broadcast twice the bow or sail numbers of all boats observed to be on the course side (OCS) at the start. The list will not be updated based on a boat's actions to start properly while or after the broadcast is made.
- 13.2** Boats identified under RRS 30.3 or 30.4 will be broadcast on designated VHF channels using bow numbers. This courtesy announcement may be broadcast before the first boat rounds the weather mark. This changes RRS 30.3 and 30.4.
- 13.3** Failure of the RC to make a broadcast or to time it accurately or the order of boat(s) hailed will not be grounds for granting redress. This supplements RRS 61.1(a) and 61.4(b)(1).
- 13.4** For the J 70, Melges 24 and VX One Classes ONLY, SI 13.1, 13.2 and 13.3 are replaced by SI "Attachment 1." This modifies RRS 29.1, RRS 30 and Race Signals.

14 CHANGE OF COURSE BEFORE THE START

- 14.1** The RC signal vessel may signal a change of course for classes not yet started.
- 14.2** If the RC signal vessel displays flag "C" (Charlie) before the warning signal accompanied by one sound, the first mark of the course will be a new mark. When in a subsequent change a new mark is replaced, it will be replaced by an original mark. This changes RRS 26 and RRS 33.

15 CHANGE OF THE NEXT LEG OF THE COURSE

- 15.1** To change the next leg of the course, the RC will lay a new mark (or move the finishing line) and remove the original mark as soon as practicable. When in a subsequent change a new mark is replaced, it will be replaced by an original mark.
- 15.2** The Offset (Mark 0) will not be set after a course change or a change of course before the start.
- 15.3** The RC may, without signaling, move a mark up to 10 degrees in direction or up to 10% in length, provided that no boat is sailing to the mark. This changes RRS 33.
- 15.4** The RC will attempt to broadcast any course changes by VHF as a courtesy. Failure of a boat to hear such notification or failure to broadcast will not be grounds for granting redress. This supplements RRS 61.1(a) and RRs 61.4(b)(1).

16 THE FINISH

- 16.1** For windward finishes, the finishing line will be between a staff displaying a black and white checkered flag on the finish vessel and a staff displaying a black and white checkered flag on the nearby finish vessel or inflatable buoy.
- 16.2** For downwind finishes, the finishing line will be on the opposite side of the signal vessel from the starting line between a staff displaying a black and white checkered flag on the signal vessel and a staff displaying a black and white checkered flag on a nearby finish vessel or the course side of an inflatable buoy.
- 16.3** Alternatively for downwind finishes, if the RC displays "F" (Foxtrot) at the warning the finishing line will be between a staff displaying a black and white checkered flag on an anchored finish vessel (which is separate from the signal vessel) and a nearby inflatable buoy. (See Illustration "A".)

17 PENALTY SYSTEM

- 17.1** Unless the course is shortened to finish at the windward mark, penalties within the zone of the windward mark or on the offset leg may be delayed and taken as soon as possible on the downwind leg. This changes RRS 44.2.
- 17.2** Penalty declarations - A boat that has taken one or more penalty turns, a boat wishing to take a post-race penalty, or a boat wishing to retire after finishing in accordance with SI 1.3 shall complete the penalty declaration form and submit via email to the Chief Judge at ashtonsh1@me.com and the Jury Secretary at edcassidy98@gmail.com before the end of the protest time limit. [NP][DP]

18 TIME LIMITS

- 18.1** The time limit for the first boat to sail the course in each class will be 90 minutes.
- 18.2** Boats failing to start and sail the course within 30 minutes after the first boat sails the course, and not subsequently retiring, being penalized or given redress, will be scored Time Limit Expired (TLE), without a hearing. (See Scoring.) This change is added to RRS 35, A4, A5 and A10.

19 HEARING REQUESTS

19.1 Protests and requests for redress or reopening can be filed online via Yacht Scoring in the Owners Corner (see Online Protest Filing System). Editable protest forms can be found under General Race Forms. Completed protest forms should be filed with or emailed to the Chief Judge at ashtonsh1@me.com and to the Jury Secretary at edcassidy98@gmail.com within the appropriate time limit. Filing online or by email is strongly recommended, however protests can be filed in person at the protest room. This supplements RRS 61.2.

19.2 Protest time limit is 60 minutes after the circle's RC signal vessel docks. The RC will post the docking time on the [ONB](#).

19.3 Notices will be posted on the [ONB](#) no later than 30 minutes after the protest time limit to inform competitors of hearings in which they are parties or named as witnesses. Hearings will be held in the protest rooms aboard the USS Yorktown at the posted time.

19.4 For the purpose of RRS 63.5(d) the "authority responsible" is the measurer appointed by the Organizing Authority (CRW Events).

19.5 Notices of protests by a committee will be posted to inform boats under RRS 60.2(a)(2).

19.6 On the last scheduled day of racing, a request for redress based on a protest committee decision shall be delivered no later than 30 minutes after the decision was posted.

19.7 If the RC posts a list of boats scored OCS, ZFP, UFD, BFD, DNE, NSC or TLE on the [ONB](#) before the protest time limit, a request for redress based on such a posted score shall be made no later than one hour after the protest time limit. This changes RRS 61.2.

20 SCORING

20.1 When five (5) or fewer races have been completed, a boat's series score will be the total of its race scores. When six (6) or more races have been completed, a boat's series score will be the total of its scores, excluding its worst score.

20.2 Boats scored TLE will be scored points equal to the number of boats sailing the course within the finishing window plus two points without a hearing. The total shall not exceed the total number of entries in that class. This changes RRS 35, A5.1, A5.2 and A10.

20.3 Inshore ORC classes will be scored using time-on-time, five number rating bands for windward/leeward courses. The RC will assign the appropriate course type and wind band prior to scoring. The RC's choice of course or wind strength is not subject to redress. This changes RRS 61.1(a) and 61.4(b)(1).

20.4 The J70s will also be scored as Corinthian, Mixed + and One Pro.

20.5 The Melges 24s will also be scored as Corinthian.

20.6 Scoring inquiries shall be made through the [ONB](#) under Scoring Inquiries.

21 Commercial Traffic [NP][DP]

21.1 A boat and its crew shall at all times keep clear of all commercial vessels and shall not maneuver in any manner that would cause a commercial vessel to be unable to sail its proper course or carry out its commercial functions in a normal manner. Boats shall take evasive action well in advance of any potentially dangerous situation.

21.2 A boat whose actions or maneuvers result in a danger signal (5 or more blasts) from commercial vessels shall be protested by the RC or protest committee. The penalty for breaking this rule may be disqualification from the entire regatta.

21.3 A boat without way shall use all means of propulsion to avoid commercial traffic. The boat may continue racing provided: a) the boat does not gain an advantage; b) using the propulsion is the boat's only means of avoiding commercial traffic; and c) the boat submits a written report to the RC by the protest time limit that describes the incident and the boat's actions.

22 REPLACEMENT OF CREW OR EQUIPMENT

22.1 Substitution of competitors or equipment will not be allowed without the prior written approval of the Event Principal Race Officer or Race Director.

22.2 Approved changes will be posted on the [ONB](#) by 0800 hrs on the day the change will take effect.

23 EQUIPMENT AND MEASUREMENT CHECKS

23.1 A boat or equipment may be inspected at any time for compliance with the class rules and SIs. On the water, a boat may be instructed by a member of the RC or the technical committee to proceed immediately to a designated area for inspection.

24 SUPPORT TEAMS [NP][DP]

24.1 Support vessels shall register with the race organizers during registration.

24.2 Support vessels shall be marked by a pennant supplied by the RC and shall remain at least 150 yards from the race course from the preparatory signal until all boats have finished or retired or the RC signals postponement or abandonment.

24.3 Failure of a support vessel to register is subject to protest and may be considered a breach of RRS 2 (Fair Sailing) by the boats associated with the support vessel.

24.4 Support vessels shall monitor the RC VHF channel of the nearest race circle and be ready to assist the RC if so instructed.

24.5 Support drivers shall have valid third-party liability insurance or the equivalent and provide proof upon request by the RC or Organizing Authority.

25 PRESS AND SPECTATOR BOATS [NP][DP]

25.1 All press and official spectator vessels shall register with the race organizers during registration. Press and official spectator vessels shall monitor the designated VHF channel for the course they are on and be ready to assist the RC if so instructed.

25.2 Press and spectator vessels shall remain outside the race course and at least 150 yards from any boat that is racing. Press and spectator vessels shall not interfere with racing boats or cause them to be affected by wake or wind shadow.

25.3 Official photo boats appointed by the OA will be allowed within the race course. Boats shall not request redress based on the position of these boats. This changes RRS 61.1(a).

25.4 Press and spectator vessels shall display a flag, or other identification symbols as required by the Organizing Authority.

26 RISK STATEMENT AND DISCLAIMER OF LIABILITY

26.1 RRS 3 states: 'The responsibility for a boat's decision to participate in a race or to continue racing is hers alone.' By participating in this event each competitor agrees and acknowledges that sailing is a potentially dangerous activity with inherent risks. These risks include strong winds and rough seas, sudden changes in weather, failure of equipment, boat handling errors, poor seamanship by other boats, loss of balance on an unstable platform and fatigue resulting in increased risk of injury. Inherent in the sport of sailing is the risk of permanent, catastrophic injury or death by drowning, trauma, hypothermia or other causes.

26.2 CRW Events LLC, sponsors of Charleston Race Week, and their employees and volunteers do not accept responsibility for loss of life or injury to participants or others, or for loss or damage to any vessel in any way or from any cause during or relating to this event.

26.3. The person in charge of a boat shall be responsible for the conduct of their crew. In the event of a serious breach of conduct, destruction of property or failure to comply with a reasonable request of any race official or committee member, the person in charge will be responsible for damages. The boat may be subject to protest, which may include disqualification from the regatta.

27 INSURANCE

27.1. Each participating boat shall be insured with valid third-party liability insurance with a minimum coverage of \$300,000 (USD) per event or the equivalent.

28 INSHORE RACE OFFICIALS

Event/Race Director: Randy Draftz
rdraftz@charlestonyachting.com

Event PRO: Taran Teague
janetaranteague@gmail.com
703.851.2552

Circle One RO: Chip Till
chiptill5351@gmail.com
843.556.6554

Circle Two RO: Mark DeGuire
mark.deguire@gmail.com
262.701.7133

Circle Three RO: Matthew Hill
mbhill827@gmail.com
401.266.4102

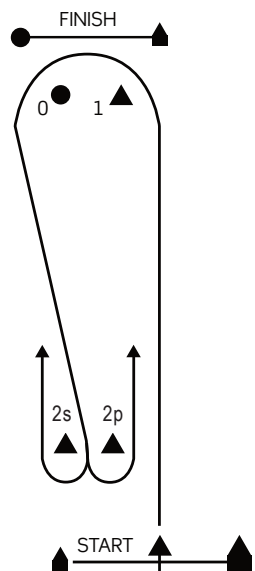
Chief Scorer: Jerry Thompson
trimsails@gmail.com

Chief Judge: Sarah Ashton
ashtonsh1@me.com
843.722.3596

INSHORE RACE COURSES CIRCLES 1, 2, & 3 • ILLUSTRATION A

The diagrams below apply to the inshore courses (Circles 1, 2 & 3).
The race committee may make minor adjustments to the leeward gate (marks 2s/2p) without signaling.

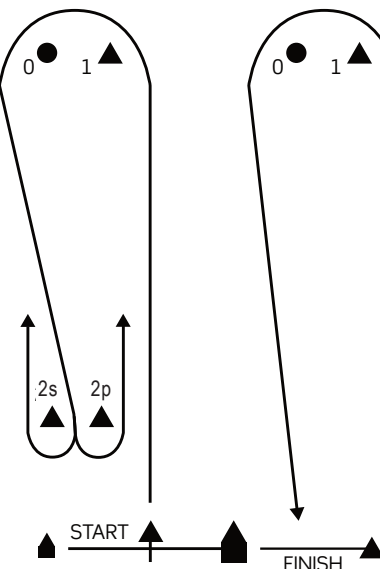
Course 3 and 5 are Windward-Leeward with a finish to Windward.



Course 3: 3 Legs
Marks: S - 1 - 0 - 2s/p - F

Course 5: 5 Legs
Marks: S - 1 - 0 - 2s/p - 1 - 0 - 2s/p - F

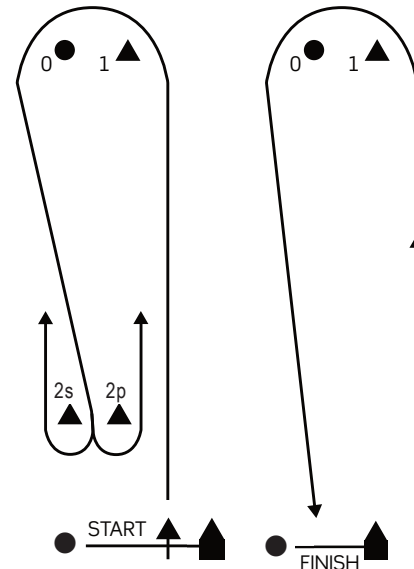
Course 4 and 6 are Windward-Leeward with a finish to Leeward.



Course 4: 4 Legs
Marks: S - 1 - 0 - 2s/p - 1 - 0 - F

Course 6: 6 Legs
Marks: S - 1 - 0 - 2s/p - 1 - 0 - 2s/p - 1 - 0 - F

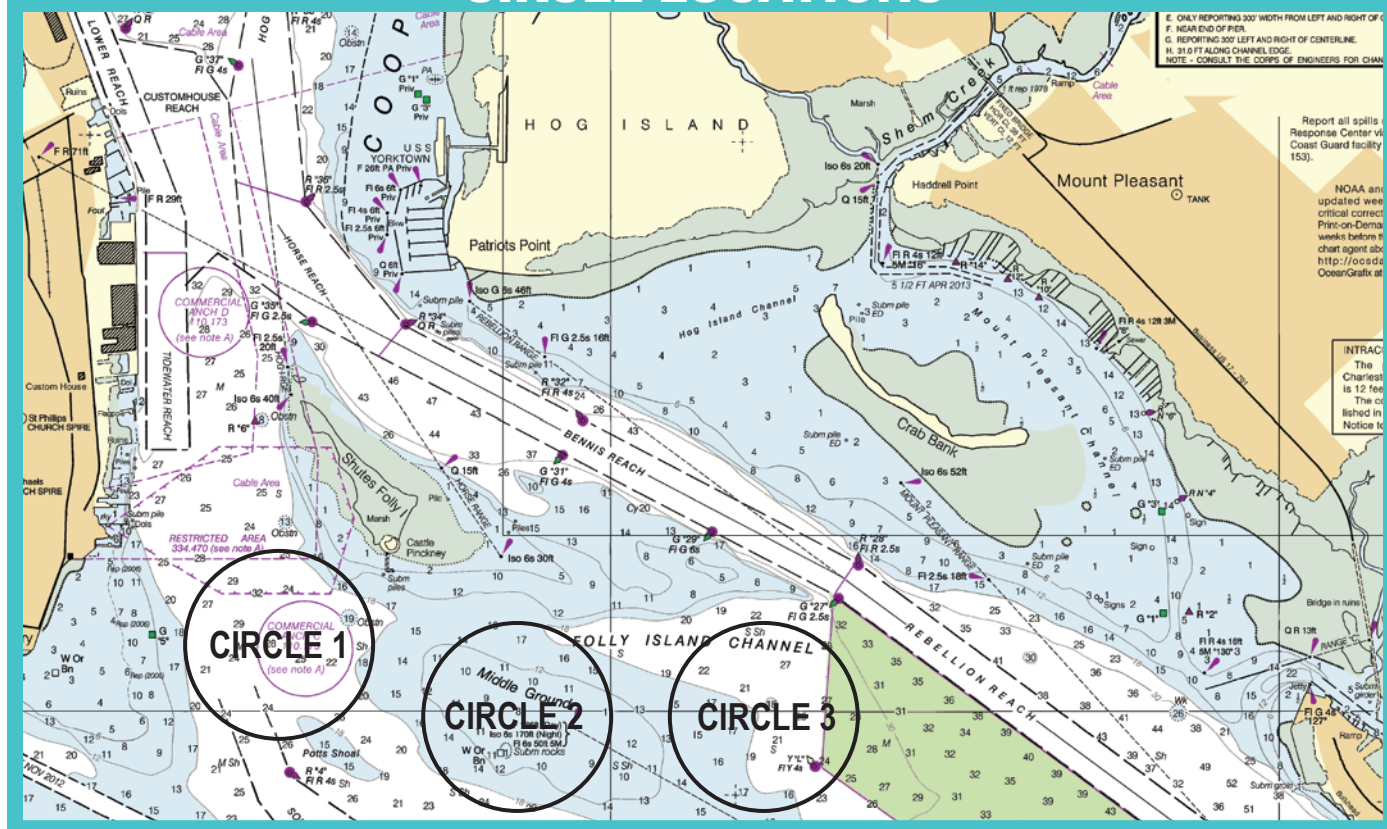
Alternative "F" (Foxtrot) Finish
Course 4 and 6 are Windward-Leeward with a separate downwind finish line.



Course 4: 4 Legs
Marks: S - 1 - 0 - 2s/p - 1 - 0 - F

Course 6: 6 Legs
Marks: S - 1 - 0 - 2s/p - 1 - 0 - 2s/p - 1 - 0 - F

CIRCLE LOCATIONS



Sailing Instructions

Attachment 1 [NP]

Automated Starting System Rules for J 70, Melges 24 and VX One Classes only:

1 THE START

1. The Vakaros RaceSense system will be used by the RC and relevant information will be available to all boats.
2. A set of instructions about the use of the electronic device will be posted on the ONB.
3. Each boat shall have a working Vakaros Atlas 2 configured for RaceSense at check-in on Thursday April 10, 2025 between 1200 and 1700, which shall be mounted on the aft side of the mast at all times while racing. Each boat shall either provide a working Atlas 2 at check-in for configuration with RaceSense or an Atlas 2 will be available for rent for any boat that does not have one [DP].
4. Competitors shall take reasonable measures to keep the Atlas 2 safe and operational, and promptly notify the RC on the water or ashore of any problems encountered with the device.
5. RRS 26 is changed. The countdown to the start on the Atlas 2 from RaceSense will be the official time and starting visual and sound signals will only be used for informational purposes.
6. The visual identification of boats infringing RRS 29 and RRS 30 by the RC is replaced with electronic identification through Vakaros RaceSense system, modifying RRS 29.1, 30.1, 30.2 30.3 and 30.4.
7. Any kind of failure of an Atlas 2, the RaceSense system, or communication systems shall only be grounds for a request for redress by the RC. This changes RRS 60.1(b), and 60.3(b).
8. If the RC displays flag "K" Kilo with a sound signal before the warning signal of a race, competitors shall restart their Vakaros Atlas 2 unit by switching it off, waiting 10 seconds and then switching it back on to reconnect to the RaceSense network. Flag "K" will remain displayed for a minimum of 2 minutes and will be removed on or before the next warning signal.
9. If the RC displays flag "G" Golf with one sound before the Warning, SI 1.4 and 13.4 will not apply.



SAILING INSTRUCTIONS

OFFSHORE CIRCLE 5

Charleston Race Week at Patriots Point - April 10-13, 2025

Organizing Authority: CRW Events, LLC

www.charlestonraceweek.com

The notation '[NP]' denotes that a breach of this rule will not be grounds for protest by a boat. This change is added to RRS 60.1.

1 RULES

- 1.1 The event is governed by the rules as defined in The Racing Rules of Sailing (RRS), the ORC Rules (www.orc.org) and the Charleston Race Week (CRW) PHRF Policies and Procedures, which are posted under documents on the Official Notice Board (ONB).
- 1.2 Boats shall comply with the [2025 Offshore Special Regulations](#) Category 4 requirements.
- 1.3 Appendix V, Alternative Penalties, will apply.
- 1.4 Appendix T, Arbitration, will apply.

2 SAFETY [DP]

- 2.1 Crew list: Before racing, each boat shall provide the race office a written list of crew for the regatta. Email the list to info@charlestonraceweek.com.
- 2.2 The RC will make daily announcements before racing and at the end of racing on the circle's VHF channel regarding vessel traffic and other pertinent information. Boats are reminded that Charleston Harbor and its approaches have a high level of commercial traffic. (See SI 21 Commercial Traffic.)
- 2.3 Boats intending to race shall check in with the RC before their warning. Boats shall confirm the number of persons on board. A boat shall continue to check in until acknowledged by the RC.
- 2.4 A boat that retires from a race, leaves the course area or returns to the course area between races shall notify the RC as soon as possible. Failure to do so may result in protest.

3 COMMUNICATION

- 3.1 Notices to competitors will be posted online on the event ONB.
- 3.2 Any questions concerning the notice of race, these SIs, or any other issue shall be submitted to the RC at info@charlestonraceweek.com. All inquiries and responses will be posted on the ONB.
- 3.3 The designated VHF channel for the circle is 73.
- 3.4 The RC will broadcast their intentions for racing each day on the designated VHF Channel at 1000 and 1100.
- 3.5 The RC will broadcast the coordinates of the Signal Boat location on the VHF channel at 1130.
- 3.6 From the first warning signal until the end of the last race of the day, except in an emergency, a boat shall not make voice or data transmissions and shall not receive voice or data communication that are not available to all boats.

4 CHANGES TO SAILING INSTRUCTIONS

- 4.1 Any shoreside change to the SIs will be posted on the ONB before 0900 on the day it will take effect, except that any change to the schedule of races will be posted by 2000 on the day before it will take place.
- 4.2 For an on-the-water change to the SIs, in accordance with RRS 90.2(c): the flag "L" (Lima) shall be displayed with the class flag, if appropriate, and will be followed by a broadcast hail of the change by VHF.

5 SIGNALS MADE ASHORE

- 5.1 Signals made ashore will be posted and displayed on the ONB.
- 5.2 When flag "AP" is displayed ashore, "1 minute" is replaced with "not less than 60 minutes" in the race signal AP. This changes RRS Race Signals.

6 SCHEDULE OF RACES & EVENTS

Thursday, April 10

1200-1700 Registration packet pickup at the tent north of Museum

1730-1800 Skippers' Meeting in the Theater aboard USS Yorktown

1800-2100 Opening Party

Friday, April 11

1200 First Warning Signal

1800-2100 Daily Awards, Race Debrief and Post Race Party aboard USS Yorktown

Saturday, April 12

1200 First Warning Signal

1800-2100 Daily Awards, Race Debrief and Post Race Party aboard USS Yorktown

Sunday, April 13

1200 First Warning Signal

1300 No Warning After

1600-1800 Awards Ceremony aboard USS Yorktown

6.1 The event venue is aboard USS Yorktown.

6.2 The RC will run a maximum of nine (9) races. One completed race constitutes a regatta

7 CLASS FLAGS

| | |
|-------|------------|
| ORC A | White |
| ORC B | Dark Green |
| ORC C | Yellow |

8 SAIL NUMBERS [NP][DP]

8.1 Boats shall display only the sail numbers under which she has entered, unless prior approval is obtained from the RC and posted on the [ONB](#).

9 RACING AREA

The primary racing area is in the vicinity of the Charleston Harbor entrance (Ft Sumter Range) and Rattlesnake Shoal as shown in "Illustration B." Alternative racing areas could be in the Charleston Harbor to include above the Ravenel Bridge in the Cooper River.

10 COURSES

10.1 Course 1 Windward Leeward: Start, weather mark to port, leeward gate, weather mark to port, finish. (See diagram in "Illustration B".)

10.2 Course 2 Point to Point: Start, weather mark, channel mark, finish. A placard will be displayed indicating the course. If a red flag is displayed round the mark to port, if green flag is displayed round the mark to starboard. Pass channel marker R "16" to starboard, pass between G "21" and R "22", leave G "25" to port, harbor finish.

10.3 The course to be sailed will be posted on the RC signal vessel at or before the warning signal.

10.4 The bearing and distance to the first mark will be displayed on the signal vessel at or before the warning signal.

10.5 If one of the leeward gate inflatable marks is missing, boats shall leave the remaining leeward mark to port.

10.6 The RC may broadcast the course description, bearing and distance to the first mark or report other visual signals by VHF. Information broadcast by the RC is provided as a courtesy only. Errors or omissions in the courtesy broadcasts will not be grounds for granting redress.

This supplements RRS 61.1(a) and 61.4(b)(1).

10.7 All government marks should be left on the channel side as per regulations.

11 MARKS

11.1

| | |
|---------------------|--------------------------|
| Weather Mark 1 | Orange Tetrahedron |
| Gate Marks 2s / 2p | Orange Tetrahedron |
| Start Pin | Yellow Tetrahedron |
| Finish Mark, Ocean | White Ball |
| Change Mark | Orange with a Black Band |
| Finish Mark, Harbor | Green Inflatable |

11.2 Government marks: G "25", G "21", R "22", G "19", R "20", G "17", G "18", G "15", R "16", G "13", R "14", G "11", R "12" and N "2" off Rattlesnake Shoal.

12 THE START

12.1 The primary starting area will be in the vicinity of the Charleston Harbor channel entrance (Ft Sumter Range) and Rattlesnake Shoal.

12.2 The starting line will be between a staff displaying an orange flag on the RC vessel and the course side of the inflatable on the port end of the line.

12.3 Boats whose warning signal has not been made shall avoid the starting area during the starting sequence for other races. The starting area is defined as 100 yards in all directions from the starting line. [NP][DP]

12.4 A boat that does not start within 10 minutes after her starting signal will be scored Did Not Start (DNS) without a hearing. This supplements RRS A4 and A5.2.

13 RECALLS

13.1 The RC will attempt to broadcast twice the sail numbers of all boats observed to be on the course side (OCS) at the start. The list will not be updated based on a boat's actions to start properly while or after the broadcast is made.

13.2 Boats identified under RRS 30.3 or 30.4 will be broadcast on designated VHF channel. This courtesy announcement may be broadcast before the first boat rounds the weather mark. This changes RRS 30.4.

13.3 Failure of the RC to make a broadcast or to time it accurately or the order of boat(s) hailed will not be grounds for granting redress. This supplements RRS 61.1(a) and 61.4(b)(1).

14 CHANGE OF COURSE BEFORE THE START

14.1 The RC signal vessel may signal a change of course for classes not yet started.

14.2 If the RC signal vessel displays flag "C" (Charlie) before the warning signal accompanied by one sound, the first mark of the course will be a new mark. When in a subsequent change a new mark is replaced, it will be replaced by an original mark. This changes RRS 26 and RRS 33.

15 CHANGE OF THE NEXT LEG OF THE COURSE

15.1 To change the next leg of the course, the RC will lay a new mark (or move the finishing line) and remove the original mark as soon as practicable. When in a subsequent change a new mark is replaced, it will be replaced by an original mark.

15.2 The RC may, without signaling, move a mark up to 10 degrees in direction or up to 10% in length, provided that no boat is sailing to the mark. This changes RRS 33.

15.3 The RC will attempt to broadcast any course changes by VHF as a courtesy. Failure of a boat to hear such notification or failure to broadcast will not be grounds for granting redress. This supplements RRS 61.1(a) and RRS 61.4(b)(1).

16 THE FINISH

16.1 Course 1 Windward Leeward Finish: For downwind finishes the finishing line will be on the opposite side of the signal vessel from the starting line.

16.2 Course 2 Point to Point Finish: Harbor finish location will be in the area bounded by Rebellion Reach to the southwest and the access to Mt. Pleasant Channel G "1" to the northeast and FL R "130" at the access to the ICW/Sullivan Island Narrows to the east. (Approximately 32°46.00N and 79°52.50W.)

16.3 The finish line will be between the staff displaying a black and white checkered flag on the finishing vessel and the course side of the inflatable.

17 PENALTY SYSTEM

17.1 Penalty declarations - A boat that has taken one or more penalty turns, a boat wishing to take a post-race penalty, or a boat wishing to retire after finishing in accordance with SI 1.3 shall complete the penalty declaration form and submit via email to the Chief Judge at ashtonsh1@me.com and the Jury Secretary at edcassidy98@gmail.com before the end of the protest time limit. [NP][DP]

18 TIME LIMIT

18.1 The time limit for the first boat to start and sail the course in each class will be 120 minutes.

18.2 Boats failing to start and sail the course within 30 minutes after the first boat sails the course, and not subsequently retiring, being penalized or given redress, will be scored Time Limit Expired (TLE), without a hearing. (See Scoring.) This change is added to RRS 35, A4, A5 and A10.

19 HEARING REQUESTS

19.1 Protests and requests for redress or reopening can be filed online via Yacht Scoring in the Owners Corner (see Online Protest Filing System). Editable protest forms can be found under General Race Forms. Completed protest forms should be filed with or emailed to the Chief Judge at Ashtonsh1@me.com and to the Jury Secretary at edcassidy98@gmail.com within the appropriate time limit. Filing online or by email is strongly recommended, however protests can be filed in person at the protest room. This supplements RRS 61.2.

19.2 Protest time limit is 60 minutes after the circle's RC signal vessel docks. The RC will post the docking time on the ONB.

19.3 Notices will be posted on the ONB no later than 30 minutes after the protest time limit to inform competitors of hearings in which they are parties or named as witnesses. Hearings will be held in the protest rooms aboard USS Yorktown at the posted time.

19.4 For the purpose of RRS 63.5(d), the “authority responsible” is the measurer appointed by the Organizing Authority (CRW Events).

19.5 Notices of protests by a committee will be posted to inform boats under RRS 60.2(a)(2).

19.6 On the last scheduled day of racing, a request for redress based on a protest committee decision shall be delivered no later than 30 minutes after the decision was posted.

19.7 If the RC posts a list of boats scored OCS, ZFP, UFD, BFD, DNE, NSC or TLE on the ONB before the protest time limit, a request for redress based on such a posted score shall be made no later than one hour after the protest time limit. This changes RRS 61.2.

20 SCORING

20.1 Boats failing to check in in accordance with SI 2.3 will receive a 20% scoring penalty calculated as stated in RRS 44.3 (c) without a hearing. The penalty will apply to the boat’s first race of the day.

20.2 Boats scored TLE will be scored points equal to the number of boats starting and sailing the course within the finishing window plus two points without a hearing. The total shall not exceed the total number of entries in that class. This changes RRS 35, A5.1, A5.2 and A10.

20.3 ORC classes will be scored using time-on-time, five number rating bands for windward/leeward courses. If other course configurations are used, the RC will assign the appropriate course type and wind band prior to scoring. The RC’s choice of course or wind strength is not subject to redress. This changes RRS 61.1(a) and 61.4(b)(1).

20.4 Scoring inquiries can be made through the [ONB](#) under Scoring Inquiries.

21 COMMERCIAL TRAFFIC [NP][DP]

21.1 A boat and its crew shall at all times keep clear of all commercial vessels and shall not maneuver in any manner that would cause a commercial vessel to be unable to sail its proper course or carry out its commercial functions in a normal manner. Boats shall take evasive action well in advance of any potentially dangerous situation.

21.2 A boat whose actions or maneuvers result in a danger signal (5 or more blasts) from commercial vessels shall be protested by the RC or protest committee. The penalty for breaking this rule may be disqualification from the entire regatta.

21.3 A boat without way shall use all means of propulsion to avoid commercial traffic. The boat may continue racing provided: a) the boat does not gain an advantage; b) using the propulsion is the boat’s only means of avoiding commercial traffic; and c) the boat submits a written report to the RC by the protest time limit that describes the incident and the boat’s actions.

22 REPLACEMENT OF CREW OR EQUIPMENT

22.2 Substitution of competitors or equipment will not be allowed without the prior written approval of the Event Principal Race Officer or Race Director.

22.3 Approved changes will be posted on the [ONB](#) by 0800 hrs on the day the change will take effect.

23 EQUIPMENT AND MEASUREMENT CHECKS

23.1 A boat or equipment may be inspected at any time for compliance with the class rules and SIs. On the water, a boat may be instructed by a member of the RC or the technical committee to proceed immediately to a designated area for inspection.

24 SUPPORT TEAMS [NP][DP]

24.1 Support vessels shall register with the race organizers during registration.

24.2 Support vessels shall be marked by a pennant supplied by the RC and shall remain at least 150 yards from the race course from the preparatory signal until all boats have finished or retired or the RC signals postponement or abandonment.

24.3 Failure of a support vessel to register is subject to protest and may be considered a breach of RRS 2 (Fair Sailing) by the boats associated with the support vessel.

24.4 Support vessels shall monitor the RC VHF channel of the nearest race circle and be ready to assist the RC if so instructed.

24.5 Support drivers shall have valid third-party liability insurance or the equivalent and provide proof upon request by the RC or Organizing Authority.

25 PRESS AND SPECTATOR VESSELS [NP][DP]

25.1 All press and official spectator vessels shall register with the race organizers during registration. Press and official spectator vessels shall monitor the designated VHF channel for the course they are on and be ready to assist the RC if so instructed.

25.2 Press and spectator vessels shall remain outside the race course and at least 150 yards from any boat that is racing. Press and spectator vessels shall not interfere with racing boats or cause them to be affected by wake or wind shadow.

25.3 Official photo boats appointed by the OA will be allowed within the race course. Boats shall not request redress based on the position of these boats. This changes RRS 61.1(a).

25.4 Press and spectator vessels shall display a flag or other identification symbols as required by the organizing authority.

26 RISK STATEMENT AND DISCLAIMER OF LIABILITY

26.1 RRS 3 states: 'The responsibility for a boat's decision to participate in a race or to continue racing is hers alone.' By participating in this event each competitor agrees and acknowledges that sailing is a potentially dangerous activity with inherent risks. These risks include strong winds and rough seas, sudden changes in weather, failure of equipment, boat handling errors, poor seamanship by other boats, loss of balance on an unstable platform and fatigue resulting in increased risk of injury. Inherent in the sport of sailing is the risk of permanent, catastrophic injury or death by drowning, trauma, hypothermia or other causes.

26.2 CRW Events LLC, sponsors of Charleston Race Week, and their employees and volunteers do not accept responsibility for loss of life or injury to participants or others, or for loss or damage to any vessel in any way or from any cause during or relating to this event.

26.3 The person in charge of a boat shall be responsible for the conduct of their crew. In the event of a serious breach of conduct, destruction of property or failure to comply with a reasonable request of any race official or committee member, the person in charge will be responsible for damages. The boat may be subject to protest, which may include disqualification from the regatta.

27 INSURANCE

27.1 Each participating boat shall be insured with valid third-party liability insurance with a minimum coverage of \$300,000 (USD) per event or the equivalent.

28 CIRCLE 5 RACE OFFICIALS

Event/Race Director: Randy Draftz
rdraftz@charlestonyachting.com

Event PRO: Taran Teague
janetaranteague@gmail.com
703.851.2552

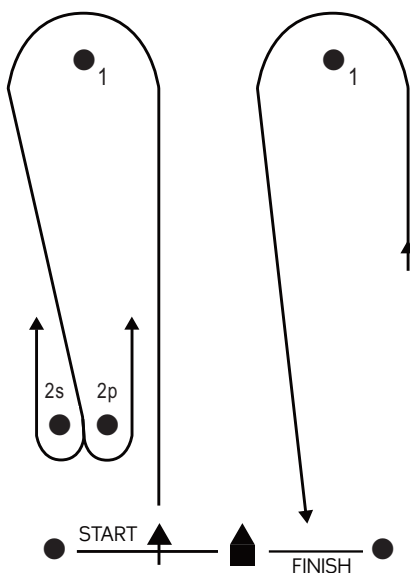
Circle 5 RO: Bruce Bingman
bloccrunner@aol.com
443.795.1040

Chief Scorer: Jerry Thompson
trimsails@gmail.com

Chief Judge: Sarah Ashton
ashtonsh1@me.com
843.722.3596

OFFSHORE CIRCLE 5 • ILLUSTRATION B

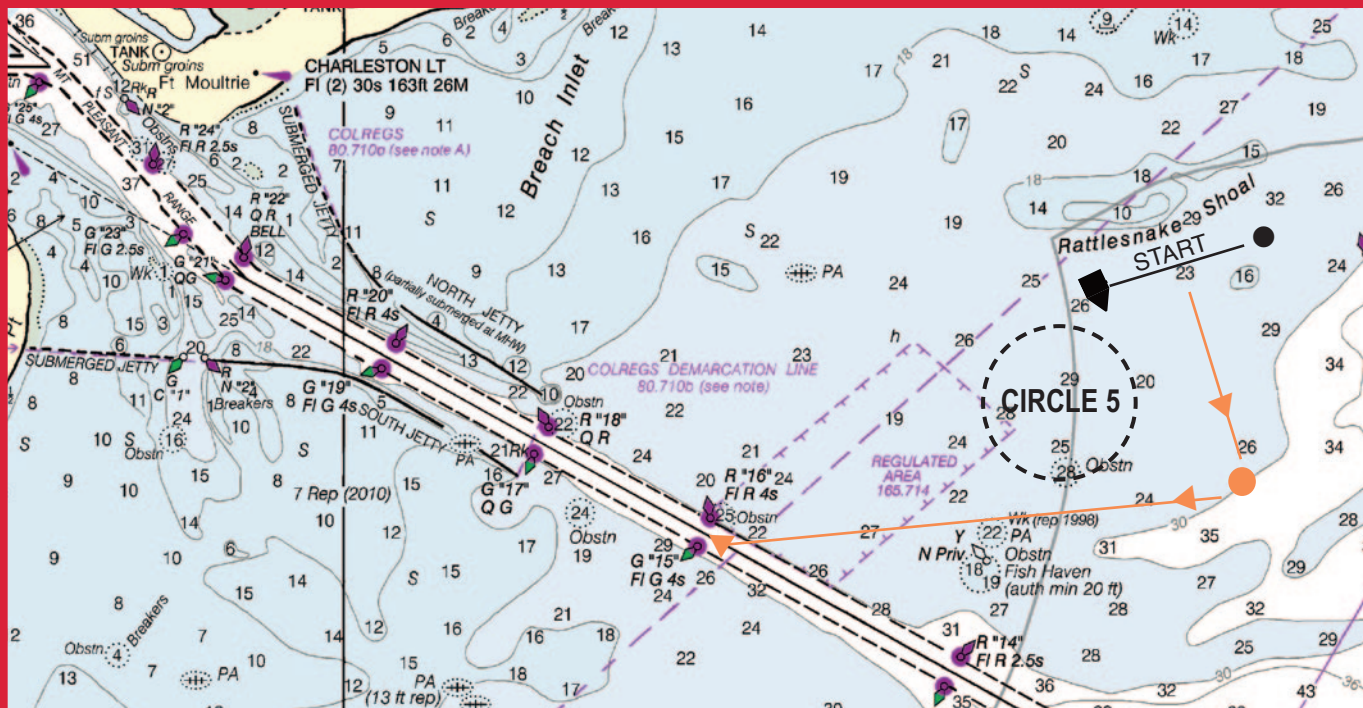
Windward-Leeward Course 1



Course 1: 4 Legs
Marks: S - 1 - 2s/p - 1 - F

Course 2:
Start, weather mark, channel mark, finish

CIRCLE LOCATION & COURSE 2





SAILING INSTRUCTIONS

PURSUIT CLASS CIRCLE 6

Charleston Race Week at Patriots Point - April 10-13, 2025

Organizing Authority: CRW Events, LLC

www.charlestonraceweek.com

The notation '[NP]' denotes that a breach of this rule will not be grounds for protest by a boat. This changes RRS 60.1.

1 RULES

- 1.1 The regatta will be governed by the rules as defined in The Racing Rules of Sailing (RRS) and the Charleston Race Week (CRW) PHRF Policies and Procedures which are listed on the Official Notice Board (ONB).
- 1.2 Boats shall comply with the [2025 Offshore Special Regulations](#) Category 4 requirements.
- 1.3 RRS 44.3 Scoring Penalties will apply.
- 1.4 Appendix V2, Alternative Penalties, will apply.
- 1.5 Appendix T, Arbitration, will apply.

2 SAFETY [NP][DP]

- 2.1 Crew lists: Before racing, each boat shall provide the race office a written list of the crew for the regatta. The number of persons sailing on each boat may change each day. Email the list to info@charlestonraceweek.com.
- 2.2 A boat that retires from a race, leaves the course area, or returns to the course area between races, shall notify the RC as soon as possible. Failure to do so may result in protest.
- 2.3 Boats intending to race shall check in with the RC on the Check-In VHF channel before their start time. Boats shall confirm the number of persons on board. A boat shall continue to check in until acknowledged by the RC.
- 2.4 The RC will make daily announcements before racing and at the end of racing on the VHF channel regarding vessel traffic and other pertinent information. Boats are reminded that Charleston Harbor and its approaches have a high level of commercial traffic. (See SI 19 Commercial Traffic.)

3 COMMUNICATION

- 3.1 Notices to competitors will be posted online on the event [ONB](#).
- 3.2 Any questions concerning the notice of race, these sailing instructions, or any other issue shall be emailed to info@charlestonraceweek.com. All inquiries and responses will be posted on the ONB.
- 3.3 The designated VHF channels for Circle 6 are as follows:

| | |
|----------|------------------------|
| Circle 6 | VHF Channel 11 |
| Check In | VHF Channel 05 or 1005 |

- 3.4 The RC will broadcast their intentions for racing each day on the designated VHF Channel at 0830, 0900 and before the warning signal.
- 3.5 From the first warning signal until the end of the last race of the day, except in an emergency, a boat shall not make voice or data transmissions and shall not receive voice or data communication that are not available to all boats.

4 CHANGES TO THE SAILING INSTRUCTIONS

- 4.1 Any shoreside change to the SIs will be posted on the [ONB](#) before 0800 on the day it will take effect, except that any change to the schedule of races will be posted by 2000 on the day before it will take place.
- 4.2 For an on-the-water change to the SIs, in accordance with RRS 90.2(c): the flag "L" (Lima) shall be displayed with the class flag, if appropriate, and will be followed by a broadcast hail of the change on the designated VHF channel.

5 SIGNALS ASHORE

5.1 Signals made ashore will be displayed and posted on the [ONB](#).

5.2 When flag “AP” is displayed ashore, the warning signal for the first start will be signaled not less than 60 minutes after “AP” is lowered. This changes RRS Race Signals.

6 SCHEDULE OF RACES & EVENTS

Thursday, April 10

1200-1700 Registration packet pickup at the tent north of Museum

1730-1800 Skippers' Meeting in the Theater aboard USS Yorktown

1800-2100 Opening Party

Friday, April 11

0930 Pursuit First Warning Signal

1800-2100 Daily Awards, Race Debrief and Post Race Party aboard USS Yorktown

Saturday, April 12

0930 Pursuit First Warning Signal

1800-2100 Daily Awards, Race Debrief and Post Race Party aboard USS Yorktown

Sunday, April 13

0930 Pursuit First Warning Signal

1300 No Warning After

1600-1800 Awards Ceremony aboard USS Yorktown

6.2 Three races are scheduled. One completed race constitutes the regatta.

7 CLASS & SAIL NUMBERS [NP][DP]

7.1 Class flags

| | |
|--------------------|-------------|
| Spinnaker A (SA) | Green |
| Spinnaker B (SB) | Pink |
| Non-Spinnaker (NS) | Green/White |

7.2. Boats shall display only the sail numbers under which she has entered, unless prior approval is obtained from the RC and posted on the ONB.

8 RACING AREA

The racing area will be Charleston Harbor and the ocean as shown on “Illustration C.”

9 COURSES

9.1 The diagram in the SI “Illustration C” shows the intended courses 1, 1E, 1A, 2, 3 and 4. The “E” and “A” courses offer a longer Government mark course. There will be four classes: Spinnaker Class A (SA), Spinnaker Class B (SB), and Non-spinnaker Class (NS).

Course 1 - 10.5 nm (SA), (SB), and (NS): start, leave G25 to starboard, pass through GATE (G21/R22), pass through GATE (G15/R16), pass through GATE (G21/R22), leave G25 to port, finish.

Course 1E - 13.5 nm (SA), (SB), and (NS): start, leave G25 to starboard, pass through GATE (G21/R22), pass through GATE (G13/R14), pass through GATE (G21/R22), leave G25 to port, finish.

Course 1A- 16.5 nm (SA), (SB), and (NS): start, leave G25 to starboard, pass through GATE (G21/R22), pass through GATE (G11/R12), pass through GATE (G21/R22), leave G25 to port, finish.

Course 2 - 14.5 nm (SA), 12.5 nm (SB), and (NS): start, leave G25 to starboard, pass through GATE (G21/R22), pass through GATE (G15/R16), leave Mark 1 to port, pass through GATE (G15/R16), pass through GATE (G21/R22), leave G25 to port, finish. Mark 1 from GATE (G15/R16) 2.0 nm (SA), 1.0 nm (SB), (SC) and (NS).

Course 3 - 17.5 nm (SA), 15.5 nm (SB), and (NS): start, leave G25 to starboard, pass through GATE (G21/R22), pass through GATE (G13/R14), leave Mark 1 to port, pass through GATE (G13/R14), pass through GATE (G21/R22), leave G25 to port, finish. Mark 1 from GATE (G13/R14) 2.0 nm (SA), 1.0 nm (SB), (SC) and (NS).

Course 4 - 19.3 nm (SA), (SB), and (NS): start, leave G25 to starboard, pass through GATE (G21/R22), round R14 to port, round N2 (off Rattlesnake Shoal) to port, round R16 to starboard, pass through GATE (G21/R22), leave G25 to port, finish.

Course 4A - 19.3 nm (SA), (SB), and (NS): start, leave G25 to starboard, pass through GATE (G21/R22), round R16 to port, round N2 (off Rattlesnake Shoal) to starboard, round R14 to starboard, pass through GATE (G21/R22), leave G25 to port, finish.

9.2 The scheduled course and start times for each boat on each course will be posted on the [ONB](#) no later than 0900 on the day of the scheduled race. The course to be sailed will be announced on VHF at 0900 and prior to the warning of the race.

9.3 Placards showing the course to be sailed for each class and the direction to Mark 1 (if used) from gate marks will be displayed on the signal vessel and announced on VHF no later than the warning signal.

9.4 All government marks should be left on the channel side as per regulations.

10 MARKS

The marks of the Course will be: Start/finishing mark is a green inflatable and a RC vessel. Mark 1 for the (SA) class is a yellow tetrahedron. Mark 1 for the (SB), (SC) and (NS) classes is a white tetrahedron. Government marks: G "25", G "21", R "22", G "15", R "16", G "13", R "14", G "11", R "12" and N "2" off Rattlesnake Shoal.

11 THE START

11.1 The starting area will be in the area bounded by Rebellion Reach to the southwest and the access to Mt. Pleasant Channel G "1" to the northeast and FL R "130" at the access to the ICW/Sullivan Island Narrows to the east. (Approximately 32°46.00N and 79°52.50W).

11.2 The starting line will be between a staff displaying an orange flag on a signal vessel at the starboard end of the starting line and the course side of an inflatable mark on the port end.

11.3 The RC will use RRS 26 for the first boat to start. All other boats will start based on their assigned pursuit starting time. The RC will not display flags or make sounds after the first boat starts. This changes RRS 26.

| | | |
|------|--|--------------------------|
| 0930 | Warning for 1st boat to start | Display class flag |
| 0931 | Preparatory Signal for 1st boat to start | Display of prep flag |
| 0934 | Preparatory flag removed for 1st boat | Prep flag removed |
| 0935 | Start of 1st boat | Class flag removed |
| | Starting times for boats following the 1st boat to start as published & posted | No other flags displayed |

11.4 RRS 26 is changed by deleting the words "preparatory signal." The preparatory signal is four (4) minutes before that boat's starting time as identified in SI 11.5.

11.5 The Start Times for the Pursuit Class courses listed in SI 9 COURSES will be posted on the document section on the [ONB](#).

11.6 A boat starting later than 10 minutes after her starting signal will be scored Did Not Start (DNS) without a hearing. This change supplements RRS A4.

12 RECALLS

12.1 RRS 29.1 (Individual Recall) is changed. No "X" (X-ray) flag will be used. The RC will make a sound signal for all boats on the course side (OCS) at their start and notify them via VHF channel. This changes RRS 29.1.

12.2 Failure of a boat to hear her recall notification or the timing or the order of such hails or failure to hail will not be grounds for granting redress. This changes RRS 61.1(a).

13 CHANGE OF THE NEXT LEG OF THE COURSE

The course configuration will not be changed. However, the RC may shorten course at any mark of the course.

14 THE FINISH

14.1 The finishing line will be in the vicinity of the start, which is the area bounded by Rebellion Reach to the southwest and the access to the Mt. Pleasant Channel G"1" to the northeast and FL R"130" at the access to the ICW/Sullivan Island Narrows to the east. (Approximately 32 46.00N and 79 52.50W).

14.2 The finishing line will be between a staff displaying a black and white checkered flag on the RC vessel at the port end and the course side of an inflatable mark to starboard.

15 PENALTY SYSTEM

Penalty declarations - A boat wishing to take a post-race penalty, or a boat wishing to retire after finishing in accordance with SI 1.4 shall complete the penalty declaration form and submit via email to the Chief Judge at ashtonsh1@me.com and the Jury Secretary at edcassidy98@gmail.com before the end of the protest time limit.

16 TIME LIMIT

16.1 All boats shall finish by 1600 on Friday & Saturday.

16.2 All boats shall finish by 1500 on Sunday.

16.3 Boats failing to start and sail the course within the time limit and not subsequently retiring, being penalized or given redress, will be scored Time Limit Expired (TLE), without a hearing. This change is added to RRS 35, A5.1 and A5.2. (See SI 18.2).

17 HEARING REQUESTS

17.1 Protests and requests for redress or reopening can be filed online via Yacht Scoring in the Owners Corner (see Online Protest Filing System). Editable protest forms can be found under General Race Forms. Completed protest forms should be filed or emailed to the Jury Secretary at edcassidy@gmail.com and to the Jury Chair at Ashtonsh1@me.com within the appropriate time limit. Filing online or by email is recommended, however protests can be filed in person at the protest room. This supplements RRS 60.3.

17.2 Protest time limit is 60 minutes after the RC signal vessel docks. The RC will post the docking time on the [ONB](#).

17.3 Notices will be posted no later than 30 minutes after the protest time limit to inform competitors of hearings in which they are parties or named as witnesses. Hearings will be held in the protest rooms aboard USS Yorktown at the time set forth in the posted notice.

17.4 For the purpose of RRS 63.5(d), the "authority responsible" is the measurer appointed by the Organizing Authority (CRW Events.)

17.5 Notices of protests by the RC, the technical committee or the protest committee will be posted to inform boats under RRS 60.2(d).

17.6 On the last scheduled day of racing, a request for redress based on a protest committee decision shall be delivered no later than 30 minutes after the decision was posted.

17.7 If the RC posts a list of boats scored OCS, NSC or TLE on the official board before the protest time limit, a request for redress based on such a posted score shall be made no later than one hour after the protest time limit. This changes RRS 61.2.

18 SCORING

18.1 All completed races will be scored. This changes RRS A2.1.

18.2 Boats scored TLE without a hearing, and not subsequently retiring, being penalized or given redress, will be scored points equal to the number of boats finishing within the time limit plus two points. This shall not exceed the total number of boats entered in that class. This supplements RRS A4, A5.1 and A5.2.

18.3 Boats failing to check in accordance with SI 2.3 will receive a 20% scoring penalty, calculated as stated in RRS 44.3(c), without a hearing. The penalty will apply to the race of the day.

19 COMMERCIAL TRAFFIC [NP][DP]

19.1 A boat and its crew shall at all times keep clear of all commercial vessels and shall not maneuver in any manner which would cause a commercial vessel to be unable to sail its proper course or carry out its commercial functions in a normal manner. Boats shall take evasive action well in advance of any potentially dangerous situation.

19.2 A boat whose actions or maneuvers result in a danger signal (5 or more blasts) from commercial vessels shall be protested by the RC or protest committee. The penalty for breaking this rule may be disqualification from the entire regatta.

19.3 A boat without way shall use all means of propulsion to avoid commercial traffic. The boat may continue racing provided: a) the boat does not gain an advantage; b) using the propulsion is the boat's only means of avoiding commercial traffic; and c) the boat submits a written report to the RC by the protest time limit that describes the incident and the boat's actions.

20 RISK STATEMENT AND DISCLAIMER OF LIABILITY

20.1 RRS 3 states: 'The responsibility for a boat's decision to participate in a race or to continue racing is hers alone.' By participating in this event each competitor agrees and acknowledges that sailing is a potentially dangerous activity with inherent risks. These risks include strong winds and rough seas, sudden changes in weather, failure of equipment, boat handling errors, poor seamanship by other boats, loss of balance on an unstable platform and fatigue resulting in increased risk of injury. Inherent in the sport of sailing is the risk of permanent, catastrophic injury or death by drowning, trauma, hypothermia or other causes.

20.2 CRW Events, Sponsors of the Charleston Race Week, and their employees and volunteers do not accept responsibility for the loss of life or injury to participants or others, or for the loss or damage to any vessel in any way or from any cause during or relating to this event.

20.3 The person in charge shall be responsible for the conduct of his crew. In the event of a serious breach of conduct, the destruction of property or the failure to comply with a reasonable request of any race officer or committee member, the person in charge shall be responsible for damages. The boat may be subject to protest, which may include disqualification from the regatta.

21. INSURANCE

Each participating boat shall be insured with valid third-party liability insurance with a minimum coverage of \$300,000 (USD) per event or the equivalent.

22 PURSUIT RACE OFFICIALS

Event/Race Director: **Randy Draftz**
rdraftz@charlestonyachting.com

Event PRO: **Taran Teague**
janetaranteague@gmail.com
703.851.2552

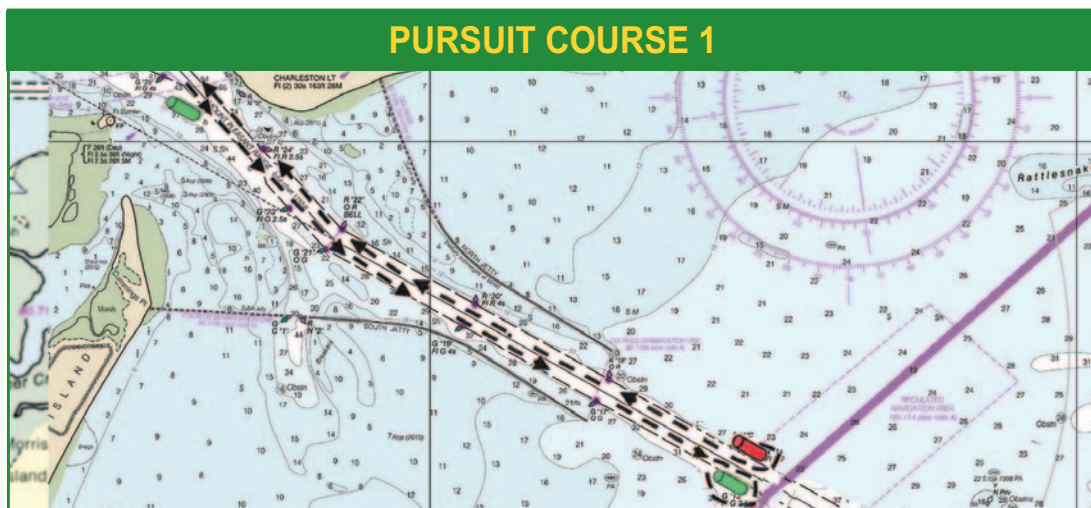
Circle 6 RO: **Ray Redniss**
rredniss@gmail.com
203.912.8858

Chief Judge: **Sarah Ashton**
ashtonsh1@me.com
843.722.3596

PURSUIT RACE COURSES 1, 1E, 1A • ILLUSTRATION C

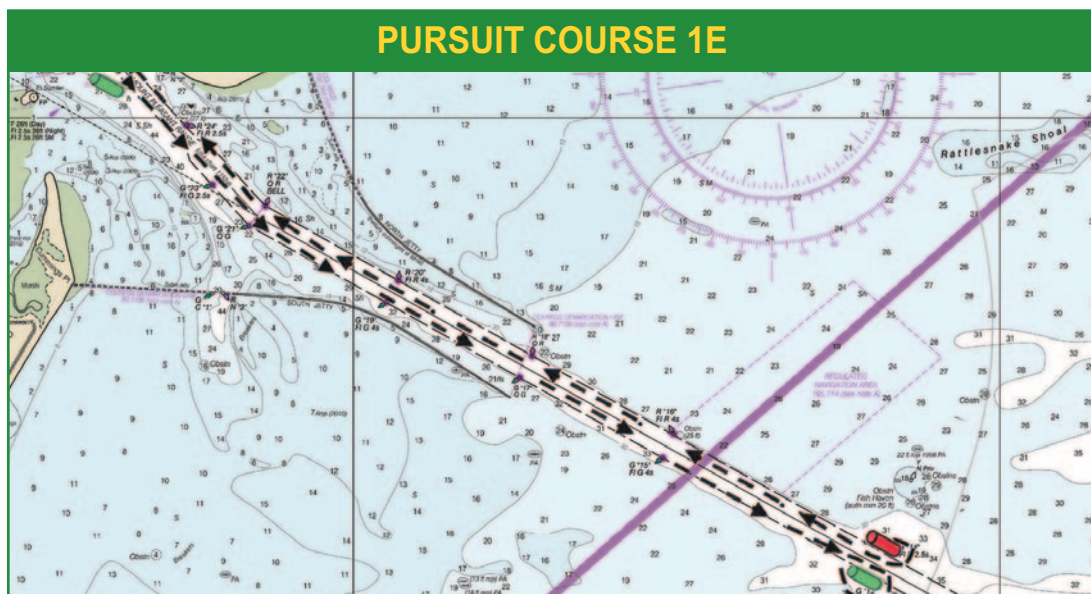
Course 1 - 10.5nm (SA), (SB) and (NS)

Start, leave G25 to starboard,
pass through GATE (G21/ R22),
pass through GATE (G15/R16),
pass through GATE (G21/R22)
leave G25 to port, finish.



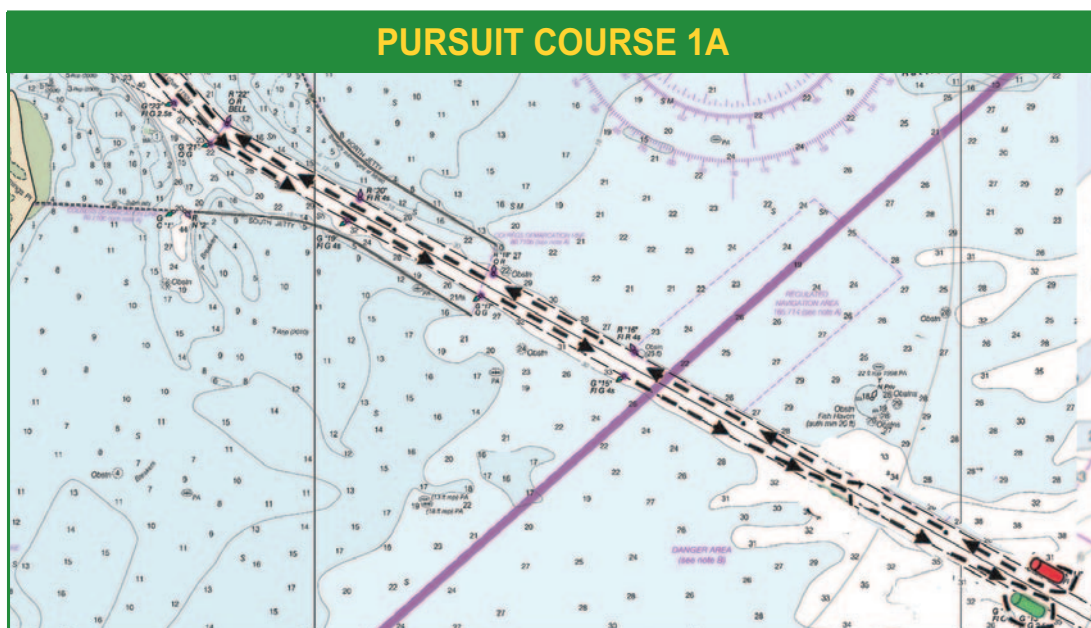
Course 1E - 13.5 nm (SA), (SB) and (NS)

Start, leave G25 to starboard,
pass through GATE (G21/ R22),
pass through GATE (G13/R14),
pass through GATE (G21/R22)
leave G25 to port, finish.



Course 1A - 16.5 nm (SA), (SB) and (NS)

Start, leave G25 to starboard,
pass through GATE (G21/ R22),
pass through GATE (G11/R12),
pass through GATE (G21/R22)
leave G25 to port, finish.



PURSUIT RACE COURSES • ILLUSTRATION C

Course 2 - 14.5nm (SA), 12.5nm (SB), and (NS):

Start, leave G25 to starboard, pass through GATE (G21/ R22), pass through GATE (G15/R16), leave Mark 1 to port, pass through GATE (G15/R16), pass through GATE (G21/ R22), leave G25 to port, finish.

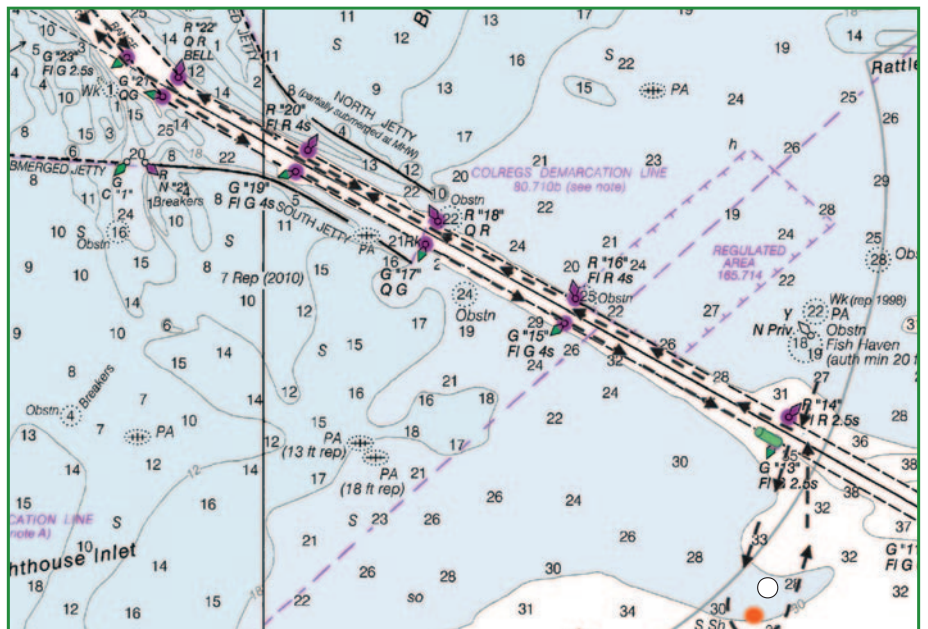
Mark 1 from GATE (G15/R16) 2.0nm (SA), 1.0nm (SB) and (NS)



Course 3 - 17.5nm (SA), 15.5nm (SB), and (NS):

Start, leave G25 to starboard, pass through GATE(G21/ R22), pass through GATE (G13/R14), leave Mark 1 to port, pass through GATE (G13/R14), pass through GATE (G21/ R22), leave G25 to port, finish.

Mark 1 from GATE (G13/R14) 2.0nm (SA), 1.0nm (SB) and (NS)



Course 4 - 19.3 nm (SA), (SB), and (NS):

Start, leave G25 to starboard, pass through GATE (G21/ R22), round R14 to port, round N2 (off Rattlesnake shoal) to port, round R16 to starboard, pass through GATE (G21R22) leave G25 to port, finish.

Course 4A - 19.3 nm (SA), (SB), and (NS):

Start, leave G25 to starboard, pass through GATE (G21/ R22), round R16 to port, round N2 (off Rattlesnake shoal) to starboard, round R14 to starboard, pass through GATE (G21R22) leave G25 to port, finish.

