



40<sup>th</sup> Biennial

**2025 MARBLEHEAD-TO-HALIFAX OCEAN RACE**

*Joint Organizing Authority (OA)*

The Royal Nova Scotia Yacht Squadron and

The Boston Yacht Club

**1<sup>st</sup> Amendment to Sailing Instructions**

**Revision 1**

Posted: July 4, 2025

The Sailing Instructions are amended so that Attachment 1 to the Sailing Instructions STARTING AREA is changed by striking the last row of the table of marks below the chart that describes Brazil Rock and its coordinates. Brazil Rock is not a mark of the course.

Attachment 1 as Amended is attached.

Posted 1230 hours, July 4, 2025

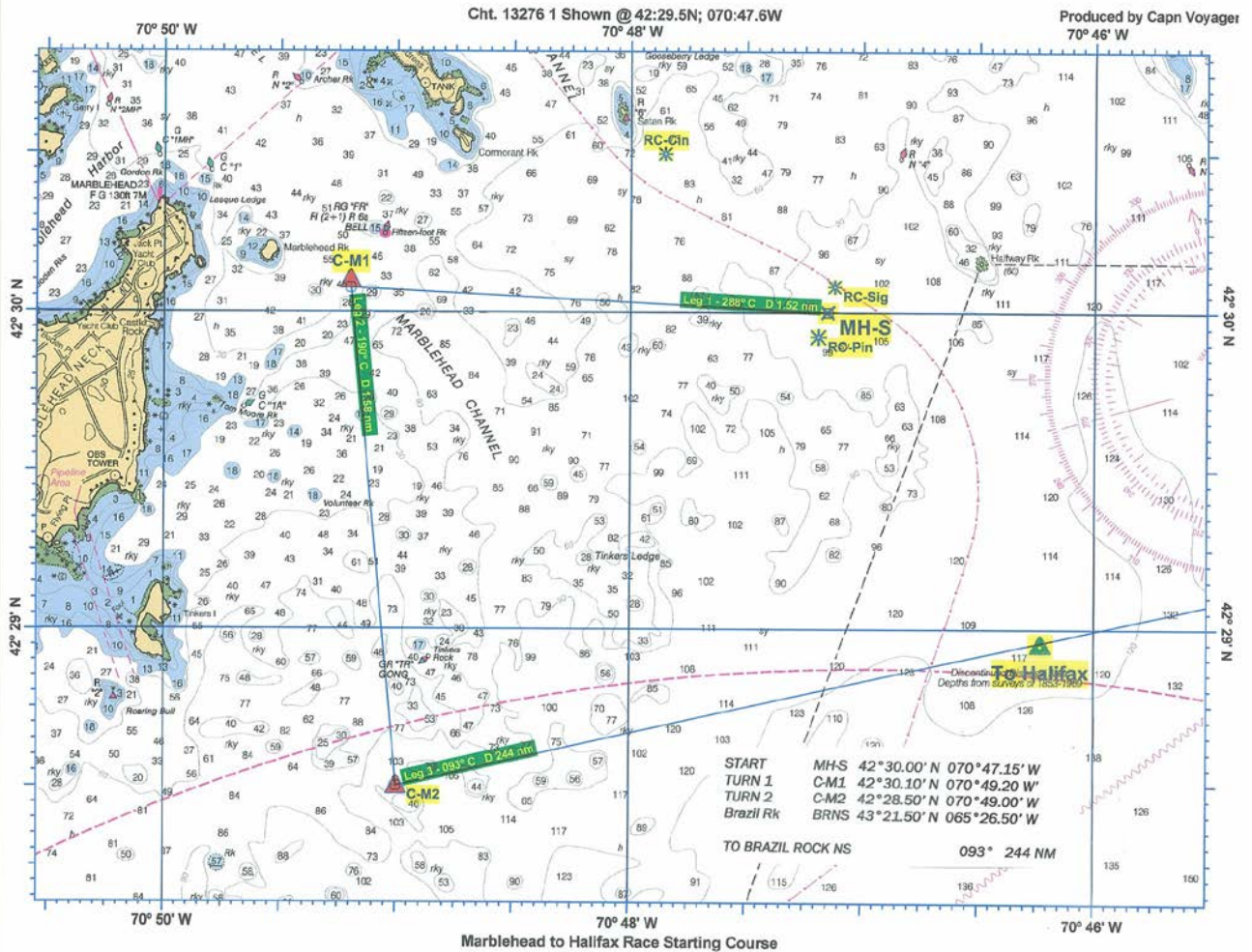
Karen Tenenbaum

2025 MHOR Co-Race Director



# MARBLEHEAD-TO-HALIFAX OCEAN RACE

## Attachment 1 to the Sailing Instructions STARTING AREA (as Amended)



Mark	Description	Latitude North	Longitude West
MH-S	Start Line	42°30.00'	70°47.15'
Turn 1 (C-M1)	Yellow Cylinder	42°30.10'	70°49.20'
Turn 2 (C-M2)	Yellow Cylinder	42°28.50'	70°49.00'