



IDA LEWIS DISTANCE RACE SAILING INSTRUCTIONS

AUGUST 15–16, 2025

Organizing Authority: Ida Lewis Yacht Club

ABBREVIATIONS

The following abbreviations apply to this Notice of Race and the Sailing Instructions:

[NP]: A competitor may not protest as per NoR 1.9 RC: Race Committee
PC: Protest Committee or International Jury OA: Organizing Authority

1.0 RULES

- 1.1 The regatta will be governed by the rules as defined in *The Racing Rules of Sailing*.
- 1.2 All boats shall minimally comply with the Coastal section of the US Sailing Safety Equipment Requirements. A boat may not be protested for failing to comply with these Requirements except by the RC or PCs.
- 1.3 The current ORC rules.
 - 1.3.1 *ORC Rule 200.1* is changed as follows:
 - 1.3.1.1 One additional crew under the age of 16 is permitted and shall not count against the crew or weight limit.
 - 1.3.1.2 Weighing in is not required. However, the skipper of a boat that is later protested for exceeding the maximum crew weights cited on the boat's certificate shall make all crew weights available prior to the protest hearing and will be required to certify the accuracy of the data.
- 1.4 For PHRF divisions - the current PHRF Regulations of the Narragansett Bay PHRF Association.
- 1.5 Rules 26, 44.3(c), 60.1, 60.5 (b)(c), 63.1, 61.4(b), A5.2 and *Race Signals* are changed.
- 1.6 The *US Sailing Prescription to Rule 63.1* is deleted.
- 1.7 The OA has adopted *World Sailing Test Rule DR21-01* and definition of start is changed as described in the NOR.
- 1.8 The Cox Ledge wind farm has been designated an *Obstruction*. See *Appendix A*.
- 1.9 The notation '[NP]' in a rule of the Notice of Race or Sailing Instructions means that a competitor may not protest another competitor for breaking that rule. This changes RRS 60.2(a).

2.0 COMMUNICATION

- 2.1 Notices to competitors will be posted on the online Official Notice Board on the Yacht Scoring Event Web Site.
- 2.2 The RC will endeavor to make announcements concerning postponements, courses, etc., on VHF Ch 79A. Failure of competitors to receive or hear such announcements will not be grounds for a boat to request redress. This changes RRS 61.4(b).

IDA LEWIS DISTANCE RACE SAILING INSTRUCTIONS

2.3 VHF CH 69 is for Check in and communicating with RC before your start when not in your starting sequence. All other RC communication will be on VHF Ch 79A

3.0 CHANGES TO THE SAILING INSTRUCTIONS

3.1 Any changes to the Sailing Instructions will be posted before 0800 hours on Friday, August 15, 2025.

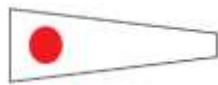




4.0 SIGNALS MADE ASHORE

4.1 Signals made ashore will be flown from the yardarm of the flagpole at Ida Lewis Yacht Club.

4.2 When flag AP is displayed ashore, '1 minute' is replaced 'not less than one (1) hour' in Race Signals AP.

5.0 CLASSES AND CLASS FLAGS

5.1 The Classes and Class Flags for classes.

CLASS NAME	CLASS NUMBER	CLASS FLAG	
ORC 1	ONE	Numeral Pennant One	
ORC 2	TWO	Numeral Pennant Two	
Double-Handed	FOUR	Numeral Pennant Three	
PHRF - ALOHA	FIVE	Numeral Pennant Four	
PHRF - CORONET	SIX	Numeral Pennant Five	
PHRF-BAGHEERA	SEVEN	Numeral Pennant Six	

5.2 Each boat shall race and start in the class to which it is assigned

5.3 [NP]: While racing, each boat shall display the numeral pennant for her respective class from her backstay no less than six (6) feet above the deck.

6.0 CHECK IN AND RETIREMENT

6.1 [NP]: Prior to the first warning signal, all boats shall check in with the RC by either hailing the RC on VHF Ch. 69 with their sail numbers and having the RC affirmatively respond, or sailing by the RC Signal Boat and having the RC affirmatively respond.

6.2 Boats retiring shall inform, at their earliest convenience, the RC by phoning (401) 846-1969 extension 6 as soon as possible.

IDA LEWIS DISTANCE RACE SAILING INSTRUCTIONS

7.0 COURSES: See Addendum 1 Courses

8.0 THE START

Friday, August 16

ORC 1	Warning Signal	1100 hours
ORC 2	Warning Signal	
Double-Handed	Warning Signal	
PHRF Aloha	Warning Signal	
PHRF Coronet	Warning Signal	
PHRF Bagheera	Warning Signal	

8.1 Classes will be started at ten-minute intervals and in the order indicated on the top of the Scratch Sheet. This changes *RRS 26*.

8.2 The starting line will be between a staff flying an orange flag on the RC Signal Boat anchored south of Rose Island in the East Passage of Narragansett Bay and the nearby race mark.

8.3 The starting race mark will be an orange Inflatable.

8.4 [NP] Boats whose warning signal has not been made shall keep clear of the starting area from the time of the course signals for the first start in the sequence until the warning signal for their class.

8.5 Any boat not starting within 10 minutes of the last starting signal of the day shall be scored DNS without a hearing. This changes *Rule A5*.

8.6 Advertising buoys may be anchored in the vicinity of the start and finish lines. These buoys are not considered marks of the course.

9.0 Recalls

9.1 In the event of an Individual Recall, the RC will attempt to hail OCS boats by name or sail number over VHF Ch. 79a. The timing and order of such hails and/or the failure to hear the hail will not be grounds for a boat to request redress. This changes *RRS 61.4(b)*.

9.2 Under World Sailing Test Rule DR21-01, the definition of *Start* is changes as follows:

Start: A boat *starts* when her hull having been entirely on the pre-start side of the starting line, and having complied with rule 30.1 if it applies, any part of her hull crosses the starting line from the pre-start side to the course side either

a) *at or after her starting signal, or*

b) *during the last 60 seconds before her starting signal.*

9.3 When a boat starts in accordance with 9.2(b) of the definition of *Start*, she shall not return to the pre-start side of the line, and the starting penalty shall be 30 minutes added to her elapsed time.

10.0 THE FINISH

10.1 The finish shall be a line between G“3” Fl G 2.5 sec Bell off Goat Island and a staff flying an orange flag (which will be illuminated at night) at the north end of the deck at Ida Lewis Yacht Club.



IDA LEWIS DISTANCE RACE SAILING INSTRUCTIONS

- 10.2 A *Mark* of the course (yellow inflatable buoy) will be placed at approximately 41° 28.81 'N, 071° 19.61 'W (on the course side of the finish line)
- 10.2.1 This buoy, which shall be left to starboard, is a *mark* of the course, but NOT PART OF THE FINISH LINE.
- 10.2.2 If the RC observes that a boat has not left this mark on the correct side prior to crossing the finish line and does not correct the error, it shall score the boat NSC without a hearing; and the penalty shall be one hour added to the boat's corrected time. This changes *Rule A5.2*.
- 10.2.3 If as a result of a valid protest hearing, the PC determines that a boat failed to honor this mark and sail the course correctly, the minimum penalty the PC shall assess is one hour added to the boat's corrected time. This changes *Rule 60.5*.
- 10.3 All boats, when they are abeam of Castle Hill Light approaching the finish, shall call the RC on VHF Ch 79A or via telephone 401-846-1969 extension 6 and report their boat name, sail number and time. If reporting by telephone, information may be left on the race answering machine.
- 10.4 [NP]: At night, boats shall illuminate their sail numbers when approaching the finish line.
- 10.5 [NP]: Upon crossing and clearing the finish line, boats shall take their own finish time, and then continue along the East-West Fairway of Newport Harbor until they reach the ILDR Muster Area along the southern mooring field. See Appendix B. ILDR Muster Area will be designated by a large Orange Inflatable Mark. At that time, boats can safely reduce speed, sail and start auxiliary power, as necessary. Boats shall then hail RC mark boat(s) on VHF Ch.79A, and direct them to come alongside in their preferred manner. [NP]: Boats will then deliver their completed, signed Declaration Sheet & Yellow Brick Transponder to that RC mark boat.

Alternatively, boats may hail RC mark boat(s) on Ch. 79A to state the boat's name and declare their intention to deliver the completed, signed Declaration Sheet & Yellow Brick Transponder to the RC at the Finish Line Desk on the deck of the north side of the Ida Lewis Yacht Club within ONE (1) hour after finishing.

Boats may then leave the Muster Area after verbal confirmation from the RC mark boat(s).

- 10.6 Boats shall complete and sign a declaration that they have sailed the race in accordance with the Rules; and shall deliver it to the RC on the RC mark boat after finishing or to the RC at the Finish Line Desk on the deck on the north side of the Ida Lewis Yacht Club within ONE (1) hour after finishing.

11.0 PENALTY SYSTEM

11.1 *RRS 44.3, Scoring Penalty*, shall apply.

11.2 The penalty under *44.3 (c)* is changed to 10 minutes of elapsed time added to the total elapsed time for each incident. Thus changes *44.3(c)*.



IDA LEWIS DISTANCE RACE SAILING INSTRUCTIONS

12.0 TIME LIMIT

12.1 The time limit for any boat to sail the course and *finish* is 1800 hours on Saturday, August 16, 2025.

13.0 RENDERING ASSISTANCE

13.1 Attention is drawn to the responsibility imposed by good seamanship and *RRS 1.1*

14.0 PROTESTS

14.1 Boats intending to file a protest or a request for redress shall inform the RC immediately after finishing by radioing the RC on VHF Ch 79A or calling the race office at (401) 846-1969 extension 6 until acknowledged.

14.2 Protests must be submitted in writing to the RC at Ida Lewis Yacht Club within one (1) hour of finishing. Protest forms will be available at the RC Finish Line Staff Desk located on the deck on the north side of the Ida Lewis Yacht Club.

14.3 The PC anticipates that it will begin hearing protests at 1330 on Saturday, August 16, 2025 or as soon after the parties have finished as possible.

14.4 The PC may apply a penalty other than disqualification for breaking a Rule other than one of *Part 2 of the Racing Rules*. This changes *Rule 60.5(c)*.

15.0 SCORING

15.1 ORC: Time allowances for ORC boats will be calculated using the boat's single number All Purpose Rating Model Time-on-Time (TOT) rating.

15.2 PHRF: Time allowances for PHRF boats will be calculated using Time-on-Time (TOT) with the handicaps as provided by PHRF-Narragansett Bay.

16.0 GOVERNMENT BUOYS

16.1 Government buoys, when not specified as part of the course, have no required side except for safe navigation.

17.0 ADVERTISING

17.1 A boat and her crew shall comply with the World Sailing Advertising Code.

17.2 Competitors may be required to display sponsor flags or graphics on the side of their hulls; these graphics, if any, will be supplied by the OA.

17.3 Advertising for tobacco products is prohibited.

17.4 Advertising that conflicts with any race sponsor is prohibited unless permission is requested and authorized by the OA in writing.

18.0 PRIZES

18.1 Prizes will be awarded on Saturday, August 16 at 1900 hours at Ida Lewis Yacht Club.

19.0 NOTES

19.1 In the event that life-saving equipment is lost overboard, it should be recovered. If recovery is impossible, any equipment that floats shall be reported immediately to the RC and the nearest U.S. Coast Guard station on VHF Ch 16.



IDA LEWIS DISTANCE RACE SAILING INSTRUCTIONS

- 19.2 Competitors are reminded of their responsibility to comply with the U.S. Coast Guard Pollution Regulations.
- 19.3 Competitors are reminded that Narragansett Bay and its approaches are considered restricted channels for commercial traffic and other vessels restricted in their ability to maneuver. Competitors must comply with the government right-of-way rules when in proximity to commercial or privileged marine traffic.
- 19.4 Skippers are reminded that there is shallow water on the northwest shore of Fort Adams.
- 19.5 Competitors are encouraged to review *Appendix A* which describes and defines the Cox Ledge Obstruction. Competitors shall not enter the Cox Ledge area designated as an obstruction in *Appendix A* while racing.
- 19.5.1 The PC may, at their discretion, assign a time penalty of less than one hour for boats which enter the Cox Ledge Exclusion Zone.
- 19.6 In an emergency, at the earliest convenience, the competitor is requested to contact 401-846-1969 extension 6, if there is no one on duty competitors are requested to call (401) 486-5138.
- 19.7 Competitors not in their starting sequence who wish to contact the RC shall do so on VHF CH 69.
- 19.8 All competing yachts shall carry, mount, and keep turned on while racing, a Yellow Brick transponder provided by the OA. Transponders shall be mounted on a stanchion in a location exposed to the sky and aft of the steering station. The transponder must be returned to the RC after finishing. A participant not returning the transponder by the end of the race time limit or two hours after finishing, whichever is later, may be scored DNF without a hearing and will be charged for the cost of this transponder. This changes *RRS 60.5(b)*.
- 19.9 Protests alleging infringement of *SI paragraphs 19.3 through 19.6* shall only be initiated by the RC or the OA. This changes *RRS 60.1*
- 19.10 Appendix G of the Racing Rules of Sailing, specifically G1.2 will be enforced.

Ida Lewis Yacht Club

Commodore

Christopher Arner

Ida Lewis Distance Race Chair

Anselm Richards

Race Committee Chair

Guy Sanchez

Principal Race Officer

William Museler

Chief Judge

Robbie Benjamin

Appendix A

Cox Ledge Obstruction

The Cox Ledge Obstruction is defined by the six virtual marks described below and the lines connecting the adjacent virtual marks and is designated as *Obstruction* pursuant to the *RRS Definition*. Boats may not enter the area designated as the Cox Ledge Obstruction while racing.

Cox Ledge Obstruction Virtual Boundary Marks

#1

41° 09' 39.55" N

71° 16' 42.36" W

#2

41° 04' 11.78" N

71° 11' 53.14" W

#3

41° 04' 45.33" N

70° 49' 11.11" W

#4

41° 08' 58.61" N

70° 49' 40.77" W

#5

41° 14' 40.84" N

71° 03' 01.68" W

#6

41° 14' 40.84" N

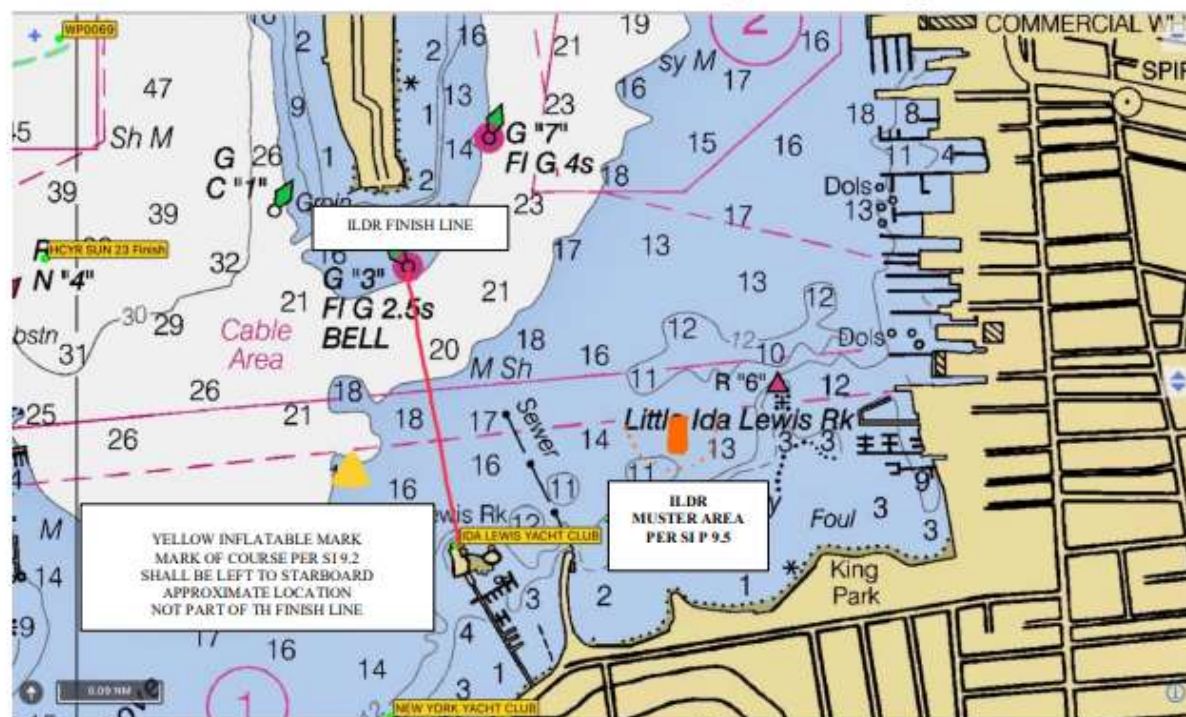
71° 11' 30.89" W



APPENDIX B

AFTER FINISHING MUSTER AREA

Location of Yellow Inflatable Mark and Muster Area Orange Mark are Approximate.



ILDR Muster Area per SI 9.5

ILDR Finish Line

Yellow Inflatable Mark

Mark of course per SI 9.2 shall be left to starboard approximate location not part of the finish line.