

# SAILING INSTRUCTIONS

55TH ANNUAL  
**Figawi**<sup>®</sup>  
MAY 22-25, 2026





## FRIDAY MAY 22

- 0800 – 2300** HYC Launch Service – channel 69 or 3 short blasts
- 0900 – 2000** **OFFICIAL Figawi Merch Store**  
Hyannis Yacht Club, 490 Ocean Street, Hyannis / Lower level, open to the public
- 1400 – 2200** **Figawi Shuttle** runs between Hyannis Marina and Hyannis Yacht Club  
Hyannis Marina pickup/dropoff at the flag pole by G Dock  
HYC pickup/dropoff at the Club's Lower Entrance Parking Lot
- 1500 – 2000** **RACE REGISTRATION** Race Packet & Bag Pickup  
*NOTE: There is no formal captain's meeting*  
**55th FIGAWI WELCOME PARTY** Let's kick off the weekend together!  
Hyannis Yacht Club – Lower Level 490 Ocean Street, Hyannis  
Cash Bar and Grill, Entertainment, Merchandise, Sponsor Tables  
Town of Barnstable weekend parking passes are available for purchase (after 5PM) or  
Look for the gate attendant at the entrance to Veterans Beach / HYC Parking lots

## SATURDAY MAY 23

- 0600 – 2000** HYC Launch Service / Breakfast available for purchase on the patio
- 0955** **Race Warning Signal** *Please consult your Sailing Instructions for race specifics*
- 1000** **Race Start Signal** *Please consult Scratch Sheets for individual START TIMES*
- 1100** **Figawi Race & Information Office Nantucket**  
Veronica's Cottage, Swains Wharf, Nantucket Boat Basin  
Closes at 1700 or an hour after the race ends, whichever comes first
- 1200 – 1800** **Official Figawi Merch Tent**  
New Whale St at Swains Wharf, Nantucket Boat Basin
- 1500 – 1800** **Sponsor Marketplace**  
Sample products from Figawi Sponsors while listening to Live Music featuring Nantucket's Own Brian Glowacki  
Marketplace Tent, Commercial St, Nantucket  
Open to the public / Purchase of alcohol beverages must show ID 21+
- 1800 – 1900** **Sponsor & Media Reception**  
*Pre-Event Invitation Only*  
Hosted by the Figawi Board
- 1900 – 2200** **Figawi Post Race Party sponsored by Mt Gay and Budweiser**  
Live Entertainment by BEACHNIGHTS  
Main Tent, Commercial St Nantucket / Bracelet and ID 21+ required for entry

## SUNDAY MAY 24

- 0900 – 1700** **Official Figawi Race Office**  
Veronica's Cottage, Swains Wharf, Nantucket Boat Basin  
*Swag, cornhole, spin the prize wheel*
- 1000 – 1800** **Official Figawi Merch Tent**  
New Whale St at Swains Wharf, Nantucket Boat Basin
- 1030** **"Hair of the Dog Comedy Hour"** with Brian Glowacki  
From the Tropicana to The Wilbur, Nantucket's own BGlown in the Figawi Tent  
Main Tent, Commercial St Nantucket / Bracelet and ID 21+ required for entry
- 1130** **27th FIGAWI INVITATIONAL for the CRAWFORD CUP**  
Presented by Hy-Line Cruises, Premier Commercial, and Simmons Boatworks  
*Watch the action from the dock!* Off the end of Straight Wharf, Nantucket Boat Basin  
MA High Schools send their best double-handed team to compete for the coveted title.
- 1200 – 1800** **Sponsor Marketplace**  
Sample products from Figawi Sponsors while listening to live music featuring Nantucket's Own Brian Glowacki  
Marketplace Tent, Commercial St, Nantucket  
Open to the public / Purchase of alcohol beverages must show ID 21+
- 1600 – 1700** **Prize Giving for the 55th Annual Figawi Race**  
Main Tent, Commercial St Nantucket / All are welcome
- 1900 – 2200** **Figawi Finale sponsored by Mt Gay & Budweiser**  
Live Music by BEACHNIGHTS  
Main Tent, Commercial St Nantucket / Bracelet and ID 21+ required for entry

# 2026 Schedule

# Instructions

## 55TH ANNUAL FIGAWI RACE WEEKEND

### 1. RULES

Figawi will be governed by the Racing Rules of Sailing. Note RRS Fundamental Rule 4- “The responsibility for a boat’s decision to participate in a race or to continue racing is hers alone.”

### 2. EQUIPMENT

All personnel on deck shall wear personal flotation while starting and finishing without exception, and at all other times except when the captain of the boat directs that it may be set aside.

All boats must comply with World Sailing Special Regulations Category 4 as posted on the Figawi website (figawi.com). In addition all boats must carry an EPFS (Electronic Position Fixing System) e.g. GPS.

Entries of classic yachts built before the introduction of Special Regulations may be exempted some regulations at the sole discretion of the race committee.

**Please pay special attention to the following provisions:**

- 1. All boats must have lifelines in accordance with Regulation 3.14.**
- 2. All boats must carry marine VHF radios in accordance with Regulation 3.29.**
- 3. All boats must have sail numbers (NOT JUST MANUFACTURERS NUMBERS OR LOGOS) in accordance with Regulation 4.01. NO SAIL NUMBER = NO SCORE.**
- 4. All boats must carry personal equipment (lifejackets, etc.) in accordance with Regulation 5.**
- 5. Crews shall practice the drill for crew overboard recovery at least once annually in accordance with Regulation 6.04.**

Only the Race Committee may protest a violation of this section. This changes RRS 60.1.

Any violation of this section may be penalized at the discretion of the jury.

RRS 55.3 is changed to allow a one design boat in a true one design configuration that includes outriggers, to sheet a spinnaker or headsail through such an outrigger. However, an outrigger may only be deployed after the start, and only deployed when actively flying a sail sheeted through it. In addition, the boat must keep clear of other boats while initially deploying an outrigger.

### 3. NOTICES TO COMPETITORS

**HYANNIS YACHT CLUB:** the official notice board will be located in the vicinity of the Steward’s office.

**NANTUCKET BOAT BASIN:** The official notice board will be located outside the Main Entrance of the Figawi Tent.

**CHANGES TO SAILING INSTRUCTIONS:** will be posted on the official notice board before 0800 on the day they take effect.

**FIGAWI WHATSAPP COMMUNICATIONS:** The Race Committee may distribute notices, course information, postponements, safety communications, and other race-related information via the official Figawi WhatsApp group. Competitors are strongly encouraged to join and monitor the group.

### 4. POSTPONEMENT

In the event of a postponement ashore the ‘AP’ flag will be flown from the yardarm of Hyannis Yacht Club. The warning signal will be made not less than one hour after the lowering of ‘AP’ ashore. In the event of a postponement on the water the warning signal will be made one minute after the lowering of ‘AP’. In the event that a postponement ashore or on the water delays the scheduled first start signal — the amount of this delay must be added to each boat’s scheduled start time as printed on the scratch sheet. This time will be announced on VHF channel 71. This time will also be sent out via a robocall and text to the on-island cell phone used on the registration form. Once the pursuit start is underway — should the start have been previously delayed — the Race Committee Start Boat will fly Flag ‘F’ to call competitor’s attention to the necessity to adjust starting times.

The time will also be sent out via the automated call, text system, and Figawi WhatsApp group to the cell phone and contact information provided during registration.

### 5. OFFICIAL TIME

The Figawi Race will use GPS time as read from the Figawi Race Committee Boat’s GPS. There will be three radio time checks at 0930, 0945, and 0955.

# Instructions

## 55TH ANNUAL FIGAWI RACE WEEKEND

### 6. THE START

#### PURSUIT START – Saturday, May 23, 2026

**STARTING AREA:** South of Hyannisport Jetty. The start line will be between an orange flag on the Figawi Race Committee Start Boat and the orange tetrahedron buoy to port.

**RESTRICTED AREA:** The Restricted Area will be bounded by the Race Committee Start Boat, the orange tetrahedron starting mark, and two yellow tetrahedrons (see diagram). Boats shall not enter the restricted area until 5 minutes before their start. Any boat entering this area before this time will be subject to protest and disqualification. Only the Race Committee may protest a violation of this rule. This changes RRS 60.1.

**STARTING TIMES:** Figawi is a pursuit race with handicaps built in to the starting time of each boat. For each boat's start time, refer to the scratch sheet. Starting times will be one of eight times, depending on the course chosen for that class. All classes will likely not sail the same course. The course chosen for each class will be announced on VHF 71 three times: 9:30, 9:45, and 9:55. The course may also be delivered via the automated call, text system, and official Figawi WhatsApp group to the contact information provided during registration.

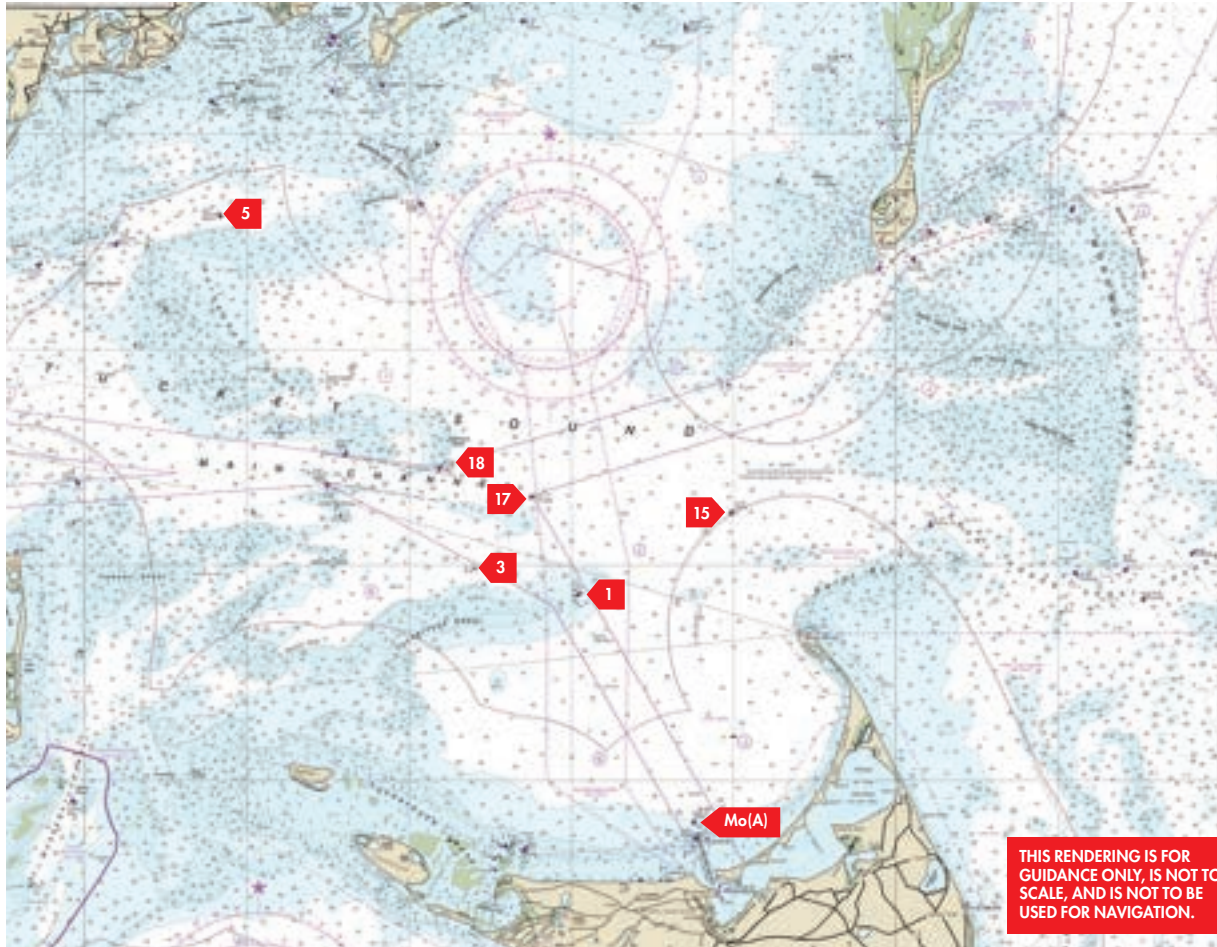
WARNING SIGNAL	0955	NUMERAL PENNANT 1 1 SOUND SIGNAL
PREPARATORY SIGNAL	0956	FLAG 'P' 1 SOUND SIGNAL
ONE MINUTE TO START	0959	FLAG 'P' REMOVED 1 SOUND SIGNAL
START	1000	NUMERAL PENNANT 1 REMOVED 1 SOUND SIGNAL FIRST BOAT STARTS

### 7. OCS BOATS

Due to the pursuit start, boats on the course side of the start line at their start time **will not be notified per RRS 29.1**. The Race Committee **may** notify such boats on VHF 71 **if practical**. This changes RRS 29.1.



# 55TH ANNUAL FIGAWI RACE WEEKEND



# Instructions

## 8. THE COURSES

### ALL CLASSES-ALL COURSES

There will be a large orange inflatable mark located approximately .5 at approximately 190-220 degrees from the starting line. All competitors in all classes, sailing all courses, must leave this mark to starboard when exiting the start area enroute to the first mark listed in each course. This mark is to be considered the first mark of each course and must be honored as part of the course.

**COURSE 1:** #17 to STARBOARD, FINISH between COMMITTEE BOAT to PORT and INFLATABLE MARK to STARBOARD, approximately 1 mile and approximately 285 degrees from Mo(a) Nantucket and approximately 41 19.020N, 70 07.55W

**COURSE 2:** Bell #5 to PORT (NORTH of Horseshoe Shoal), FINISH between COMMITTEE BOAT to PORT and INFLATABLE MARK to STARBOARD, approximately 1 mile and approximately 285 degrees from Mo(a) Nantucket and approximately 41 19.020N, 70 07.55W

**COURSE 3:** Bell #5 to PORT (NORTH of Horseshoe Shoal), #17 to STARBOARD, FINISH between COMMITTEE BOAT to PORT and INFLATABLE MARK to STARBOARD, approximately 1 mile and approximately 285 degrees from Mo(a) Nantucket and approximately 41 19.020N, 70 07.55W

**COURSE 4:** Bell #5 to PORT (NORTH of Horseshoe Shoal), #15 (NORTH of Great Point) to STARBOARD, FINISH between COMMITTEE BOAT to PORT and INFLATABLE MARK to STARBOARD, approximately 1 mile and approximately 285 degrees from Mo(a) Nantucket and approximately 41 19.020N, 70 07.55W

**COURSE 5:** Tuckernuck Shoal Bell #1 to PORT, #15 (NORTH of Great Point) to STARBOARD, FINISH between COMMITTEE BOAT to PORT and INFLATABLE MARK to STARBOARD, approximately 1 mile and approximately 285 degrees from Mo(a) Nantucket and approximately 41 19.020N, 70 07.55W

**COURSE 6:** Tuckernuck Shoal Bell #1 to STARBOARD, Half Moon Shoal Bell #18 to PORT, FINISH between COMMITTEE BOAT to PORT and INFLATABLE MARK to STARBOARD, approximately 1 mile and approximately 285 degrees from Mo(a) Nantucket and approximately 41 19.020N, 70 07.55W

**COURSE 7:** Bell #5 to (NORTH of Horseshoe Shoal) to PORT, #15 (NORTH of Great Point) to STARBOARD, Tuckernuck Shoal Bell #1 to PORT, FINISH between COMMITTEE BOAT to PORT and INFLATABLE MARK to STARBOARD, approximately 1 mile and approximately 285 degrees from Mo(a) Nantucket and approximately 41 19.020N, 70 07.55W

**COURSE 8:** Bell #5, (NORTH of Horseshoe Shoal) to PORT, #17 to STARBOARD, #3 (NORTH of Tuckernuck Shoal) to PORT, FINISH between COMMITTEE BOAT to PORT and INFLATABLE MARK to STARBOARD, approximately 1 mile and approximately 285 degrees from Mo(a) Nantucket and approximately 41 19.020N, 70 07.55W

**COURSES WILL NOT BE POSTED ON THE RACE COMMITTEE START BOAT.**

# Instructions

## 55TH ANNUAL FIGAWI RACE WEEKEND

### 9. POSTED COURSE

Any boat determined by the Race Committee to have violated RRS 28.1 (any boat who has not sailed the course posted for its' class) may be DSQ'd without a hearing. This changes RRS 63.1.

### 10. SHORTENING COURSE

At any rounding mark- a Committee or Patrol Boat displaying flag 'S' with two sound signals as the first boat approaches means, "The race has been shortened- finish between this flag and the nearby rounding mark." In the event of a shortened course, time allowances will need to be recalculated to the correct allowance for the length of the actual course sailed. This means that the final race results may not be in the order that boats crossed the shortened course finish line.

### 11. PENALTIES

The Scoring Penalty, RRS 44.3 will apply to a boat that breaks a rule of RRS Part 2.

### 12. TIME LIMIT

The time limit is 1800. If no boats in a class sail the course and finish before 1800—all boats in that class will be scored DNF. If the first boat to finish in a class sails the course and finishes before 1800- any boat in her class that fails to sail the course and finish within 1 hour of the first finish will be scored DNF. These times may be adjusted by a race committee announcement on VHF 71. In the event the Committee Boat is not on station competitors may take their own finish times by leaving Nantucket MO (a) close aboard to port and reporting their finish time to Race Headquarters. Boats retiring from the race must notify the race committee on VHF 71 or by calling 508-221-6891. **ANY BOAT WHO RETIRES FROM THE RACE AND FAILS TO CONTACT THE RACE COMMITTEE TO ADVISE THEM OF THEIR STATUS WILL NOT BE ALLOWED TO ENTER THE 2027 FIGAWI RACE.**

The Nantucket Harbormaster is requiring that all Figawi competitors lower their sails outside the harbor before accessing the entrance channel. The Harbormaster considers this an important safety issue. Any boat failing to follow this directive may be excluded from Figawi 2027.

### 13. PROTESTS

Protest forms will be available at Race Headquarters, Veronica's Cottage, Swain's Wharf. All protests shall be filed in accordance with RRS 61 and be delivered to the Figawi Race Office within one hour of the time the Committee Boat docks.

Protests will be heard Sunday morning beginning at 0900. Time and place of hearings will be posted at the Race Office on Swains Wharf, Nantucket.

### 14. RADIO

The race committee channel is VHF 71. Competitors must monitor this channel throughout the race. There will be three time checks: 0930, 0945, 0955. This is a courtesy only. The course chosen for each class will be announced on VHF 71 three times: 9:30, 9:45, and 9:55. The course may also be delivered via the automated call, text system, or the Figawi WhatsApp group to the contact information provided during registration. During the race, information regarding shortening or abandonment, and emergency/safety information will be broadcast on this channel.

### 15. FIGAWI PENNANT

All boats racing must fly the official Figawi pennant from their backstay. Only the Race Committee may protest a violation of this section. This changes RRS 60.1.

### 16. TROPHY PRESENTATION

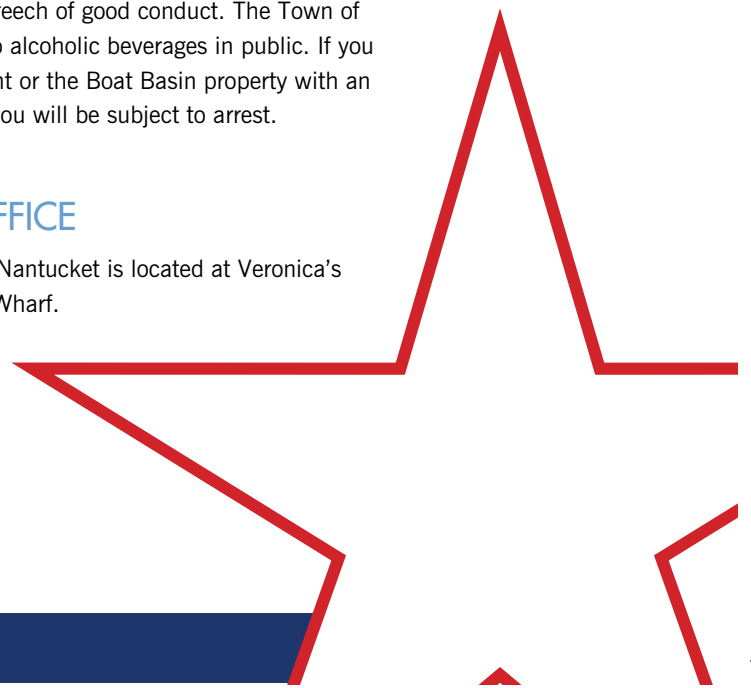
Trophies to the top 4 finishers in each class, winner of the Foster Team Race, Best Performance in Spinnaker and non-Spinnaker classes, and winners of the various special awards.

### 17. CONDUCT

The boat owner/skipper will be responsible for the conduct of their crew offshore and onshore. We have been guests of the people of Nantucket for over 50 years—we will not allow a serious breach of good conduct by any participant to endanger this relationship. The Figawi Committee and the Nantucket Boat Basin reserve the right to eject any boat, its skipper and crew, from the Boat Basin and to reject any future entry to Figawi in the event of a serious breach of good conduct. The Town of Nantucket allows no alcoholic beverages in public. If you leave the Figawi Tent or the Boat Basin property with an alcoholic beverage you will be subject to arrest.

### 18. RACE OFFICE

The Race Office on Nantucket is located at Veronica's Cottage on Swains Wharf.





# J. David Crawford High School Invitational

SUNDAY, MAY 24 AT 1130

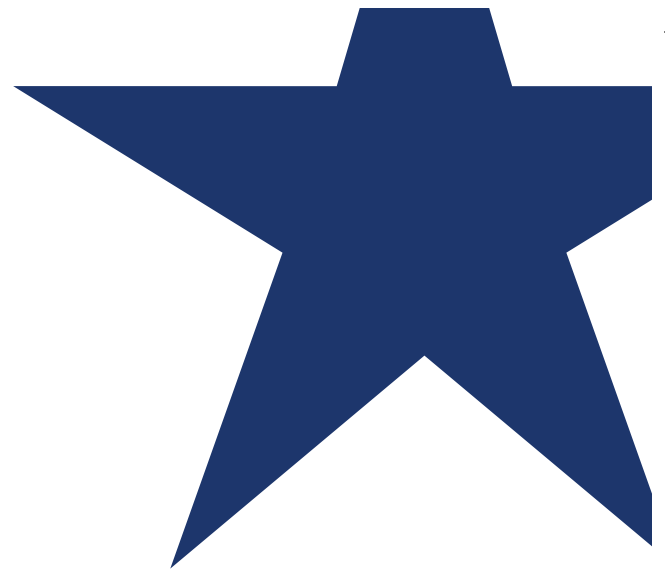
## 26TH ANNUAL FIGAWI CRAWFORD CUP INVITATIONAL

Massachusetts High Schools send their best double handed team to compete for the coveted title. Racing takes place right off the docks of Nantucket Boat Basin.



Dedicated to the legacy of longtime Figawi Chairman J. David Crawford





# Thanks

THANK YOU FOR SUPPORTING  
SERIOUS FUN WITH A PURPOSE

## COMMODORE



## ADMIRAL



## CAPTAIN



## LIEUTENANT

## MEDIA

## VENUE PARTNERS

