



NEW YORK YACHT CLUB
172nd NYYC ANNUAL REGATTA
June 12-14, 2026
Newport, Rhode Island

SAILING INSTRUCTIONS incorporating AMENDMENT 1 (in red)

The notation '[NP]' in a rule of the sailing instructions (SIs) means that a boat may not protest another boat for breaking that rule. This changes RRS 60.1.

1 RULES

- 1.1** The event will be governed by the rules as defined in *The Racing Rules of Sailing* (RRS), including the current ORC rules, the current NYYC Classics Rules incorporating the *Classic Rating Formula* (CRF), the current PHRF Regulations as administered by the PHRF of Narragansett Bay (PHRF-NB), the current New England Multihull Association (NEMA) rules, and the current class rules for any one-design or boxrule classes.
- 1.2** [NP][DP] Safety Equipment Requirements:
- a) Addendum 1 – US Safety Equipment Requirements (USSER)
 - All boats shall minimally comply with the US Nearshore section of the USSER and shall comply with their class rules, where applicable.
 - RRS 40.1 shall apply to boats not rigged with lifelines and crew shall wear a personal flotation device at all times while racing.
 - In the event of a conflict between these Requirements and applicable class rules, the class rules shall apply.
- 1.3** The US Sailing prescription to RRS 63.1 is deleted. However, when redress under RRS 61.4(b) has been requested by one or more boats in the same class, the protest committee may invite all boats in that class to attend and be made parties to the hearing.
- 1.4** [DP] The NYYC Classics Rules that are posted as NOR Addendum 2 shall apply to all boats sailing in the Classics divisions.
- 1.5** 12 Metre Class: In the event that a crew member falls overboard and is no longer connected to the yacht, she shall:
- a) Retire from the race
 - b) Notify the Race Committee on her respective VHF channel that she has a crew overboard
 - c) Receive a score equal to the number of starters for that race without a hearing. The scoring abbreviation will be MOB.
- This changes RRS 60.5(b), A4, A5, and A10.
- 1.6** [NP] For the IC37 Class: Organizing Authority (OA) supplied Velocitek units must be installed as directed by the Velocitek Representatives and the OA. The Velocitek System must be operational while racing.
- 1.7** For the Two-Day Series, the M32 Class will sail on the Yellow Circle and shall race under the rules as stated in their separate set of Sailing Instructions for the Two-Day Series.

2 COMMUNICATIONS: NOTICES, ANNOUNCEMENTS, VHF CHANNELS

- 2.1 Notices, including race documents, results and amendments, shall be posted on the online Official Notice Board located on the event [website](#). Protest Committee information, including protest time limits and hearing schedules, shall be posted on the online Protest Committee Notice Board located on the event [website](#). All notices may also be posted on the unofficial notice boards which are located in the courtyard of the NYYC Sailing Center at Harbour Court.
- 2.2 A Notice to Competitors confirming the intended start time, circle assignments and formats of racing for each class will be posted no later than 2000 the day prior. This information may also be communicated via the WhatsApp group and/or emailed to all entrants. Communications from the OA or Race Committee made on the 172nd NYYC Annual Regatta WhatsApp group are official. It is strongly advised to have one crew member from each entry subscribed to the WhatsApp group.
- 2.3 Any change to the SIs will be posted before 0900, or no later than 15 minutes before the removal of flag AP when displayed ashore, on the day it will take effect, except that any change to the schedule of races will be posted by 1900 on the day before it will take effect. Flag L will be flown to signify such posting.
- 2.4 In addition to the signals described in SI 3.3, the Race Committee will endeavor to announce the rendezvous locations as described in SI 6 at 0900 each day on VHF Channel 72. The failure to make this announcement or for a boat to hear this announcement will not be grounds for a boat to request redress. This changes RRS 61.4(b).
- 2.5 After the rendezvous locations and any other regatta announcements have been made, Race Committee signal vessels will monitor and communicate with their respective classes on the circle VHF channels listed in SI 2.6.
- 2.6 VHF Channels – The Race Committee VHF channels for each circle are shown below:
- | | | |
|------------------------|--------------|------------------------|
| a) Friday, June 12 | Blue Circle | VHF Channel 72 |
| b) Sat-Sun, June 13-14 | Blue Circle | VHF Channel 72 |
| | White Circle | VHF Channel 69 |
| | Red Circle | VHF Channel 1079 (79A) |
| | Green Circle | VHF Channel 71 |
| | Yellow | VHF Channel 05 |
- 2.7 Each yacht shall carry a VHF radio capable of communicating with the Race Committee on their respective circle channel.

3 SIGNALS MADE ASHORE

- 3.1 Flag signals will be flown from the western yardarm of the flagpole at Harbour Court.
- 3.2 When flag AP is displayed ashore, “one minute” is replaced with “not less than one hour” in Race Signal “AP”.
- 3.3 Signals designating the rendezvous locations for all circles will be displayed **no later than two hours prior to the scheduled first warning** each day from the western yardarm of the flagpole at Harbour Court.

4 SCHEDULE OF RACES

- | | | |
|-----------------------|--------------|---|
| 4.1 Thursday, June 11 | 1600-1800 | Registration (Harbour Court) |
| Friday, June 12 | 0800-0930 | Late Registration (Harbour Court) |
| | 1100 | First Warning Signal for the Around-the-Island Race |
| Saturday, June 13 | 1000* | First Warning Signal for all courses * |
| Sunday, June 14 | 1100 | First Warning Signal for all courses |

***This changes NOR 7.2.**

- 4.2 No warning signal shall be made for any fleets after 1500 on Sunday, June 14.

5 CLASSES, CIRCLE ASSIGNMENTS, CLASS FLAGS, SCRATCH SHEETS AND FORMAT

- 5.1 **Classes:** The OA will divide boats into classes.
- a) For the Around-the-Island Race on Friday, June 12, classes will be assigned a numeral or alphabetic designation and be designated the Blue Circle.
- b) For the Two-Day Series on Saturday/Sunday, each class will be given a numeral, alphabetic or class designation and be assigned each day to one of five circles (Blue, White, Green, Red or Yellow). Note that a class may sail in different circles and be assigned different numeral designations on different days.

- 5.2 Format:** For racing on Saturday and Sunday for all classes, the Race Committee may run races of the following types:
- Navigator Races – SI Addendum A (using government marks and racing marks on Narragansett Bay and/or Rhode Island Sound).
 - Drop Mark Races – SI Addendum B (using inflatable buoys on Rhode Island Sound and/or Narragansett Bay).
- 5.3 Scratch Sheets:** There will be separate scratch sheets for the Around-the-Island Race on Friday, and for the Two-Day Series on Saturday/Sunday. Scratch sheets will be posted on the online Official Notice Board.
- 5.4 [NP] Class Flags:** Unless indicated on the scratch sheet, each boat shall display the numeric, alphabetic or class flag corresponding to her class designation, as shown on the scratch sheet, from her backstay approximately six feet above the deck from the warning signal for the first class on her circle until she is no longer racing. Boats without a permanent backstay shall conspicuously display these flags in an alternate position in the aft part of the boat.

6 RENDEZVOUS LOCATIONS

- 6.1** Circle rendezvous locations are listed below and will be designated as described in SI 3.3. See SI Addendum C – NYYC Primary Race Areas.

Rhode Island Sound:

- Area “A” -in the vicinity of 160° M for 1.2 NM from R “2” QR Whistle marking Brenton Point
- Area “B” -in the vicinity of 120° M for 2.5 NM from R “2” QR Whistle marking Brenton Point
- Area “C” -in the vicinity of 275° M for 3.0 NM from R “2” QR Whistle marking Brenton Point
- Area “D” -in the vicinity of 225° M for 2.0 NM from R “2” QR Whistle marking Brenton Point

Newport Harbor and near the Newport Pell Bridge:

- Area “K” -between Goat Island and Rose Island
- Area “M” -in the vicinity of R “12” west of Rose Island
- Area “O” -in the vicinity of Potter Cove (just north of west end of the Newport Pell Bridge)

North of the Newport Pell Bridge:

- Area “R” -in the vicinity of 200° for 0.5 NM from Halfway Rock
- Area “T” -in the vicinity of Hope Island off Quonset Point
- Area “U” -in the vicinity of 035° M for 1.0 NM from Hope Island (*not shown in Addendum C*)

- 6.2** Once on station, the Race Committee may announce the lat/long positions of the signal boat and starting mark over the circle VHF channel. Failure to make such an announcement, or the timing of any announcement, will not be grounds for a boat to request redress. This changes RRS 61.4(b).

7 [NP] CHECK-IN AND RETIREMENT

- 7.1 Check in on Land:** Each boat shall check in at the NYYC Sailing Center at Harbour Court during the registration times so designated in the NOR.

7.2 Check in on Water:

- Around-the-Island Race: Prior to their course signal, each boat shall check in with the Race Committee check-in vessel displaying flag L that will be anchored to leeward and outside of the starboard end of the starting box by sailing or motoring by the stern of the check-in vessel, announcing her sail number and being acknowledged by the Race Committee.
- Two-Day Series: Prior to their course signal each day, each boat shall check in with the Race Committee signal vessel by sailing or motoring by the stern of the signal vessel, announcing her sail number, and being acknowledged by the Race Committee.

- 7.3** Boats retiring shall inform the Race Committee on their circle VHF channel or by calling the Sailing Office on (401) 845-9633.

8 COURSES AND MARKS

The courses and marks for the Annual Regatta are described in the following SI Addenda:

| | |
|--------------------------------|---------------|
| Courses using Government Marks | SI Addendum A |
| Drop Mark Courses | SI Addendum B |

9 THE START

- 9.1 The intended order of starts for the Blue Circle sailing in the Around-the-Island Race on Friday, June 12, will be included in the Race Committee's announcement on VHF Channel 72 at 0900.
- 9.2 A boat that does not start within 10 minutes after her starting signal will be scored Did Not Start without a hearing. This changes RRS A5.1 and A5.2.
- 9.3 For the White Circle during the Two-Day Series and the Blue Circle for the Around-the-Island Race: The starting line will be between a staff displaying an orange flag on the Race Committee signal vessel and either a staff displaying an orange flag on the port-end Race Committee vessel or a staff displaying an orange flag on the port-end starting mark as described in the relevant SI Addendum.
- 9.4 For the Blue, Green and Red Circle during the Two-Day Series: The starting line will be between a staff displaying an orange flag on the Race Committee signal vessel and either a staff displaying an orange flag on the port-end Race Committee vessel or the course side of the port-end starting mark as described in the relevant SI Addendum.
- 9.5 [NP] Boats whose warning signal has not been made shall keep clear of the starting area from the time of the course signals for the first start in the sequence until the warning signal for their class.
- 9.6 [NP] Around-the-Island Race: The Race Committee will delineate a starting box by placing two or more buoys to leeward of the starting line to form a starting box area between these buoys and the starting line. Boats shall remain outside the starting box from the time of the course signals for the first start until the warning signal for their class.
- 9.7 IC37 Class:
- a) Starting System and OCS notification: The Race Committee intends to utilize the Velocitek system for all race starts to provide a digital representation of the starting line and to identify OCS boats and notify them via digital signals to each boat's Velocitek unit. If the Race Committee determines that the system will not be used, they will display flag G prior to the warning signal (see SI 9.7(c)).
 - b) Velocitek Starting System
 - (i) The starting line will be a digital representation of the line between a staff displaying an orange flag on the starboard end signal vessel and a staff displaying an orange flag on the port-end starting mark or a staff displaying an orange flag on the port-end Race Committee vessel..
 - (ii) When Velocitek is used, in addition to the race signals in RRS 29, individual OCS boats will be notified digitally via their Velocitek unit. Boats identified as OCS will also be notified digitally via their Velocitek unit upon returning to the pre-start side of the starting line. There will be no VHF hails. Failure of this equipment will not be grounds for a boat to request redress. This changes RRS 61.1(a).
 - c) Flag G Starting System
 - (i) The starting line will be as described in SI 9.3 or 9.4 according to the circle assignment for the class..
 - (ii) The Race Committee will endeavor to hail boats observed to be OCS at the start on the circle VHF channel as a courtesy. Failure of the hailing equipment, failure to hear a hail, delay in hailing or the order in which hails are given will not be grounds for a boat to request redress. This changes RRS 61.1(a).

10 CHANGE OF COURSE

See Addendum B – Drop Mark Courses.

11 THE FINISH

The finishing line will be between a staff displaying a blue flag on the Race Committee vessel and the course side of the finishing mark as described in the relevant SI Addendum.

12 PENALTY SYSTEM

- 12.1 For the Around-the-Island Race on Friday, June 12, US Sailing Prescription Appendix V rule V1 shall apply for all boats. Penalties specified by class rules do not apply.
- 12.2 For the Two-Day Series, for all classes except the IC37s, US Sailing Prescription Appendix V rule V1 shall apply.

- 12.3 For the 12 Metre class and any other class with 10 or more entrants US Sailing Prescription Appendix V rule V2 shall also apply.
- 12.4 For the IC37 class in the Two-Day Series, the first sentence of RRS 44.1 is changed so that a boat may take a One-Turn Penalty when she may have broken one or more rules of Part 2 in an incident while *racing*.
- 12.5 The Protest Committee may impose suitable penalties, other than disqualification, for breaches of the USSER or other non-Part 2 rules. This changes RRS 60.5(c).
- 12.6 The penalty for a breach of SI 9.5 or 9.6 shall be a minimum of two points. This changes RRS 60.5(c).

13 TIME LIMIT

- 13.1 For courses designated in accordance with SI A2.4, SI A2.5, SI A2.6, or SI A2.7, the Time Limit for the first boat to sail the course and *finish* is five hours and the Finishing Window is 120 minutes. Boats failing to finish within the Finishing Window, and not subsequently retiring, penalized or given redress, will be scored Time Limit Expired (TLE) without a hearing. A boat scored TLE shall be scored points as described in SI 15.4. This changes RRS 35, A5.1, A5.2 and A10.
- 13.2 For courses designated in accordance with Addendum B, the Time Limit for the first boat to sail the course and *finish* is three hours and the Finishing Window is 45 minutes. Boats failing to finish within the Finishing Window, and not subsequently retiring, penalized or given redress, will be scored Time Limit Expired (TLE) without a hearing. A boat scored TLE shall be scored points as described in SI 15.4. This changes RRS 35, A5.1, A5.2 and A10.

14 PROTESTS AND REQUESTS FOR REDRESS

- 14.1 The intent to file a protest and the identity of the boat being protested shall be communicated to the Race Committee at the first reasonable opportunity after the boat intending to protest finishes until acknowledged by the Race Committee. This changes RRS 60.2(a)(1).
- 14.2 Written protests or requests for redress shall be submitted through the online hearing request form, located on the regatta webpage, as soon as possible, but not later than one hour after the Race Committee finishing boat for that circle has docked. The time limit for filing a hearing request for each circle will be posted on the online Official Notice Board.
- 14.3 Protests will be heard as soon as possible. The Protest Committee will attempt to hear protests in the order of receipt.

15 SCORING

- 15.1 The Around-the-Island Race will be scored separately from the Two-Day Series.
- 15.2 In the Two-Day Series, a boat's series score will be the total of her race scores. This changes RRS A2 and IC37 CR H3.1(d)(e).
- 15.3 One race is required to be completed to constitute a series.
- 15.4 A boat scored Time Limited Expired (TLE) by the Race Committee shall be scored points for the finishing place two more than the points scored by the last boat that finished within the Finishing Window stated in SI13.1 or SI13.2. This changes RRS 35, A5.1, A5.2 and A10.
- 15.5 Teams competing for team trophies will be scored in accordance with the NOR.
- 15.6 For scoring purposes, the distance used (as needed) will be that as calculated by the Race Committee. The calculated distance shall not be grounds for a boat to request redress. This changes RRS 61.4(b).
- 15.7 ORC Classes: Windward/Leeward races ("W" courses as defined in Addendum B) will be scored using 5 Band W/L. All other courses will be scored using PCS.
- 15.8 ORC Classes: The decision on wind ranges and course classification will be at the sole discretion of the Race Committee and shall not be grounds for a boat to request redress. This changes RRS 61.4(b).

16 PRIZES

- 16.1 Prizes will be awarded as described in the NOR.
- 16.2 Additional prizes may be awarded at the discretion of the OA.

17 LIABILITY AND MEDIA WAIVER

- 17.1 As a condition of entry, each owner, skipper and participating crew member shall submit, prior to racing, an online liability waiver/media release. The links to this form can be found on the Annual Regatta [website](#).

17.2 Media Waiver - Competitors and crew members on the competing boats grant, at no cost, the New York Yacht Club Regatta Association, Inc., New York Yacht Club, and any official sponsors of the regatta, the absolute right and permission to use their name, voice, image, likeness, biographical material as well as representations of the boats in any media worldwide (being television, print and internet media), including video footage, for the sole purposes of advertising, promoting, reporting and disseminating information regarding the Annual Regatta and the participants in the Annual Regatta.

17.3 Competitors participate in the regatta entirely at their own risk. See RRS 3, Decision to Race. The Organizing Authority, New York Yacht Club and any official sponsors will not accept any liability for material damage or personal injury or death sustained in conjunction with or prior to, during or after the regatta. Attention is also drawn to RRS 46 and USSER 1.2, Responsibility.

18 [NP] SAFETY REGULATIONS

18.1 Restricted Channels: Competitors are reminded that Narragansett Bay and its approaches are considered restricted channels for commercial traffic and other vessels restricted in their ability to maneuver. Competitors must comply with the government right-of-way rules when in proximity to commercial or privileged marine traffic.

18.2 [NP] Newport Security Zone: In the event there is racing in Narragansett Bay, competitors should be aware of heightened security around the Navy base in Newport just to the north of the Newport Pell Bridge. The area may be defined by one or more white buoys marking the Newport Security Zone along the coast of the Naval Facilities from Coasters Harbor to the breakwater at the north end of Coddington Cove and the line defined by the buoys shall rank as an obstruction. Yachts shall not enter this area. A Navy patrol boat monitors the area and vessels navigating in the Exclusionary Zone may face action by Coast Guard and Naval authorities.

18.3 Additional Restricted Areas: There may be additional restricted areas due to Navy activity, shipping or fishing operations may be described in an amendment to the sailing instructions.

19 NOTES

19.1 The Annual Regatta website can be found at <https://nyyc.org/172nd-annual-regatta>.

19.2 For further information please contact:

New York Yacht Club, Harbour Court
5 Halidon Avenue
Newport, RI 02840

Tel: 401-845-9633

Fax: 401-846-3303

Email: sailingoffice@nyyc.org

SAILING INSTRUCTIONS

ADDENDUM A – COURSES USING GOVERNMENT MARKS

A1 ORDER OF START

The intended order of starts will be announced at course signals on the circle VHF Channel. Classes may or may not start in numerical order. The Race Committee may combine two or more classes into one start by displaying multiple class flags at the warning signal. The Race Committee will endeavor to announce the next class(es) to start on the circle VHF Channel.

A2 COURSES

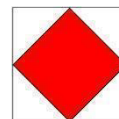
- A2.1** All boats shall pass through the center span only for any course passing under the Jamestown Verrazano Bridge and/or the Newport Pell Bridge, in which case the center span bridge piers define a gate mark.
- A2.2** Government marks shall have no required side except when designated as a rounding mark.
- A2.3** No later than the warning signal, the Race Committee will display on a board the course to be sailed. The Race Committee will endeavor to announce the designated courses over the circle VHF channel. Failure to make such an announcement shall not be grounds for a boat to request redress. This changes RRS 61.4(b).
- A2.4 COURSE 1** – If number one is displayed, the course will be clockwise around Conanicut Island:
- Special Mark “E”, if used (see SI A3.6)
 - G “11” Q G Bell to starboard
 - GR “NR” Bell 650 yards SW of Beavertail Point to starboard
 - The center span of the Jamestown Verrazano Bridge
 - G “5” 1,250 yards NW of Conanicut Point to starboard
 - R “2” Fl R 4 Sec Bell 900 yards NE of Conanicut Point to starboard
 - The center span of the Newport Pell Bridge
 - Pass to the west of R “12” off Rose Island
 - Finish off Fort Adams between a staff displaying a blue flag on a Race Committee vessel and the finishing mark. The finishing line will be located approximately 0.4 NM north of the Fl R 6 sec Horn “2” on the northern point of Fort Adams.
- A2.5 COURSE 2** – If number two is displayed, the course will be counter-clockwise around Conanicut Island:
- Special Mark “E”, if used (see SI A3.6)
 - Pass to the west of R “12” off Rose Island
 - The center span of the Newport Pell Bridge
 - R “2” Fl R 4 Sec Bell 900 yards NE of Conanicut Point to port
 - G “5” 1,250 yards NW of Conanicut Point to port
 - The center span of the Jamestown Verrazano Bridge
 - GR “NR” Bell 650 yards SW of Beavertail Point to port
 - G “11” Q G Bell to port
 - Finish off Fort Adams between a staff displaying a blue flag on a Race Committee vessel and the finishing mark. The finishing line will be located approximately 0.4 NM north of the Fl R 6 sec Horn “2” on the northern point of Fort Adams.
- A2.6 COURSE 3** – If number three is displayed, the course will be designated using buoys as described in SI Addendum A3. The Race Committee will list the marks in the order to be rounded and the required side to leave each mark. The course will be:
- Start
 - Round the marks in the designated order leaving each mark to the designated side
 - Finish between a staff displaying the blue flag on the Race Committee vessel and the nearby finishing mark. Note that the intended finishing line will be set at the starting location of the Race Committee signal vessel.

A2.7 COURSE 4 – If number four is displayed, the course will be designated using buoys as described in SI Addendum A3. The Race Committee will list the marks in the order to be rounded and the required side to leave each mark. The course will be:

- Start
- Round the marks in the designated order leaving each mark to the designated side
- Finish between a staff displaying the blue flag on a Race Committee vessel and the nearby finishing mark. The intended finishing line will be a separate line set approximately .2 to starboard of the anchored Race Committee signal vessel. The Race Committee signal vessel will remain anchored at the location of the start.

A2.8 The Race Committee vessel at the finish may or may not be the same vessel that started the race.

A2.9 If at the start, Flag F is displayed on a separate pole, the finishing line will be between a staff displaying a blue flag on a Race Committee vessel and the nearby finishing mark in the vicinity of 1NM at a bearing of 310° from the Fl R 6 sec Horn “2” on the northern point of Fort Adams.



A3 MARKS

A3.1 The starting mark will be as described in SI Addendum B2.1.

A3.2 The finishing mark will be as described in SI Addendum B2.1.

A3.3 Special Marks “E” and “L”, if used, will be the same as the original mark colors for each circle as described in SI Addendum B2.1.

A3.4 If used, Special NYYC Temporary Inflatable Race Marks 16, 17, O2 and N2, as designated on the current South Bay Race Chart, will be orange tetrahedron buoys.

A3.5 All buoys listed on the current *South Bay Race Chart* provided at registration may be used in Course 3 and Course 4. In addition, the marks listed in SI Addendum A3.6, A3.7, A3.8 and A3.9 are additional rounding marks that might be used.

A3.6 Special Mark “E”

- a) The Race Committee may add a new first Special Mark “E” to any course described in SI Addendum A2.
- b) If Special Mark “E” is used for Course 1 or Course 2, the Race Committee will display on a board the letter “E” next to the letter “S” (round Special Mark “E” to STARBOARD) or next to the letter “P” (round Special Mark “E” to PORT).
- c) If Special Mark “E” is used for Course 3 or Course 4, the Race Committee will list Special Mark “E” along with the designated rounding side as the first mark on the course board as described in SI A2.6.
- d) The magnetic bearing and distance (in nautical miles to the nearest tenth) to Special Mark “E” will be posted on a board on the Race Committee signal vessel.

A3.7 Special Mark “L”

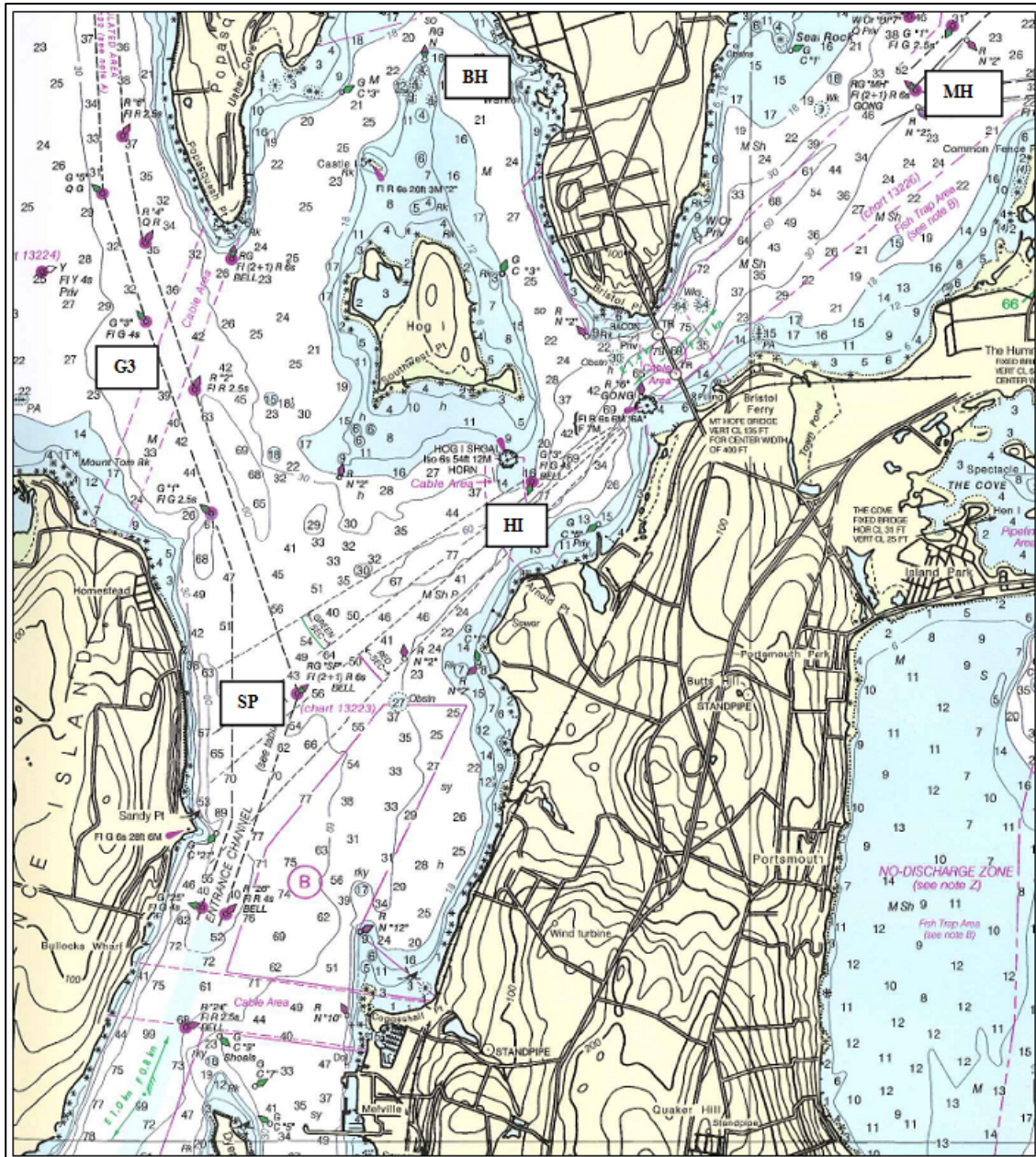
- a) The Race Committee may set Special Mark “L” approximately 0.1 NM to windward of the start line.
- b) If Special Mark “L” is used, it will be listed as a mark as described in SI Addendum A2.6 and A2.7.

A3.8 GOVERNMENT MARKS AND ISLANDS

See charts 13205, 13218, 13223, 13226 and 13224 for more detail.

| <u>Description</u> | <u>Approx. location</u> |
|--|--|
| 1 Gould Island | 41° 32.00’ N; 071° 20.67’ W (center of island) |
| 3 Hope I (east of Quonset) including R “2” at the southwest end and G C “1” at the northeast end | |
| 4 Conanicut Island | |
| 5 RW “NB” Mo(A) WHIS | 41° 23.00’ N; 071° 23.36’ W |
| 7 R “2” Fl R 4s WHIS south of Point Judith | 41° 18.46’ N; 071° 28.35’ W |
| 1BI G “1 BI” Fl G 4s BELL north of Block I | 41° 15.49’ N; 071° 34.55’ W |
| M Block Island including: | |
| R “4” Fl R 6s WHIS off Southwest Pt | 41° 08.73’ N; 071° 37.35’ W |
| Black Rock Pt. Buoy 2 | 41° 08.42’ N; 071° 35.74’ W |
| U Buzzards Light Tower Fl 2.5s 67ft 17M Horn | 41° 23.82’ N, 071° 02.08’ W |
| PR Prudence Island including R “8” northwest of Patience Island and RG N at the northern end | |

| | | |
|----|--|--|
| SP | RG "SP" Fl (2+1) R 6s BELL | 41° 36.92' N; 071° 17.59' W |
| G3 | G "3" Fl G 4s (approx. 0.5 NM sw of Popasquash Neck) | 41° 38.53' N; 071° 18.46' W |
| MH | RGR "MH" Fl (2 + 1) R 6s GONG in Mt. Hope Bay | 41° 39.54' N; 071° 14.04' W |
| BH | RGR N "Middle Ground Buoy" approx. 0.8 NM n of Hog I | 41° 39.68' N; 071° 16.87' W |
| HI | G "3" Fl G 4s BELL approx. 0.4 NM south southeast of Hog I | 41° 37.79' N; 071° 16.29' W |
| DI | Dutch Island | 41° 30.19' N; 071° 24.04' W (center of island) |
| S1 | Sakonnet River R "2A" BELL | 41° 27.75' N; 071° 12.90' W |



Marks near Prudence Island, Bristol and Mt. Hope Bay

SAILING INSTRUCTIONS

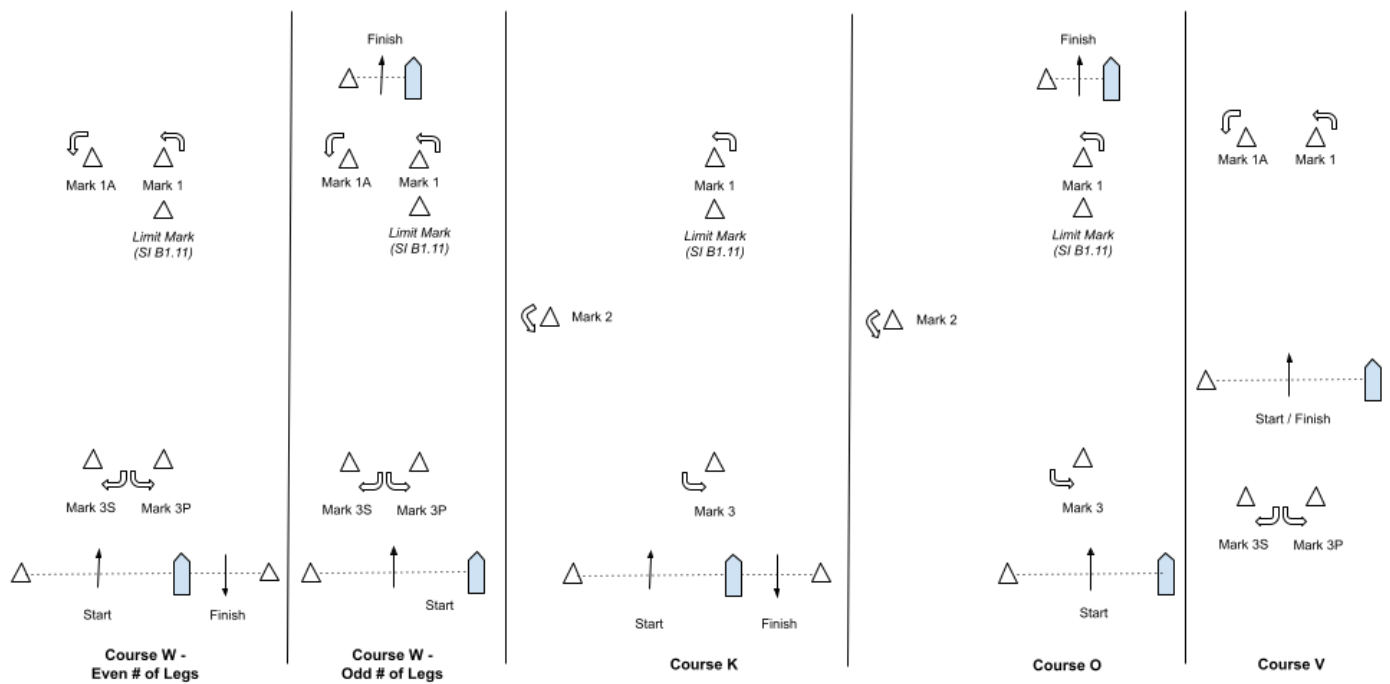
ADDENDUM B – DROP MARK RACES

B1 COURSES FOR DROP MARK RACES

B1.1 The Race Committee signal vessel will signal the course on a course board. Course designations are as follows:

- W2 Start – 1 – 1A – Finish (downwind)
- W3 Start – 1 – 1A – Gate (3S/3P) – Finish (upwind)
- W4 Start – 1 – 1A – Gate (3S/3P) – 1 – 1A – Finish (downwind)
- W5 Start – 1 – 1A – Gate (3S/3P) – 1 – 1A – Gate (3S/3P) – Finish (upwind)
- W6 Start – 1 – 1A – Gate (3S/3P) – 1 – 1A – Gate (3S/3P) – 1 – 1A – Finish (downwind)
- K Start – 1 – 2 – 3 – 1 – Finish (downwind)
- O Start – 1 – 2 – 3 – 1 – 3 – Finish (upwind)
- V Start – 1 – 1A – Gate (3S/3P) – 1 – 1A – Gate (3S/3P) – Finish (upwind)

B1.2 Course Diagrams:



B1.3 Course “W” is a Windward/Leeward course with a windward offset mark. A board indicating the number of LEGS to be raced will be shown next to the letter “W”. The distance between the windward mark and the offset mark shall not count as a leg for the purposes of indicating the number of legs.

B1.4 Course “O” is a Triangle/Windward/Leeward/Windward course.

B1.5 Course “K” is a Triangle/Windward/Leeward course.

B1.6 Course “V” is a Windward/Leeward course with a windward offset mark and a start/finish line in the middle.

B1.7 The leeward mark for Courses “W”, “O” and “K” will be an inflatable mark(s) set approximately 0.10 NM to windward of the starting line. A gate mark 3S/3P may be used for Course “W”.

B1.8 The leeward mark for Course “V” will be inflatable marks set to leeward of the starting line. A gate mark 3S/3P may be used for Course “V”.

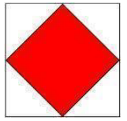
B1.9 The course designations, distance and bearing to the windward mark will be displayed on a board.

B1.10 Marks, including the windward offset mark, shall be rounded in order and always left to port, except that a gate, when used, shall be rounded as described in Definitions, *Sail the Course*. In the event a gate is not set, the single leeward mark shall be rounded to port.

B1.11 There will be a windward offset mark adjacent to the windward mark for courses W2, W3, W4, W5, W6 and V.

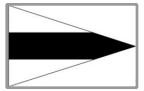
B1.12 Special Finish Mark “F”

If at the start, Flag F is displayed on a separate pole, the finishing line will be between a staff displaying a blue flag on a Race Committee vessel and the nearby finishing mark in the vicinity of 1NM at a bearing of 310° from the Fl R 6 sec Horn “2” on the northern point of Fort Adams.



B1.13 Limit Mark

- a) The Race Committee may set an inflatable limit mark approximately 6-8 boat lengths to leeward of the windward mark.
- b) The limit mark shall be left to port on both the upwind and the downwind legs.
- c) In the event of a change of course to the windward mark after the first windward mark rounding in that race, the limit mark will not be set.
- d) For courses W3 and W5, on the final leg heading to the windward finish the limit mark is not a mark of the course.
- e) The location of the limit mark or the failure of the Race Committee to set the limit mark shall not be grounds for a boat to request redress. This changes RRS 61.4(b).
- f) The Race Committee will display flag Third Substitute on a separate pole, at or before the warning signal, if the limit mark will be set.



B1.14 Long Windward Mark:

For all “W” courses, the Race Committee may set both a long windward mark and offset, and a short windward mark and offset. The distance to the long windward mark and the distance to the short windward mark will be displayed on a course board. If flag D is displayed on a separate pole, at or before the warning signal, that class will use the long windward mark for each weather leg in that race. If flag D is not displayed, that class will use the short windward mark for each weather leg in that race.



B2 MARKS FOR DROP MARK COURSES

B2.1 Marks will be inflatable shapes as follows and may be a mix of both robotic and traditional marks:

| | <u>Circle</u> | <u>Original marks</u> | <u>Starting</u> | <u>Finishing</u> | <u>Limit Mark (SI B1.13)</u> |
|-------|---------------|-----------------------|-----------------|------------------|------------------------------|
| WHITE | Orange | Green | Yellow | Pink | |
| BLUE | Yellow | Green | Yellow | | |
| RED | Orange | Green | Green | | |
| GREEN | Orange | Green | Green | | |

B2.2 The finish mark for Course “V” will be the same color as the start mark.

B3 COURSE CHANGE

B3.1 To change the next leg of the course, the Race Committee will move the existing mark (or finishing line).

B3.2 The Race Committee may change the course by up to five degrees in bearing and/or 0.2 nm in length without a signal or change of mark color. This changes RRS 33.

B3.3 In addition to the requirements in RRS 33, the Race Committee will attempt to announce any course change on their respective circle VHF channel. Failure to make such an announcement shall not be grounds for a boat to request redress. This changes RRS 61.4(b).

B4 THE FINISH

B4.1 The finishing line will be between a staff displaying a blue flag on a Race Committee vessel and the nearby finishing mark.

- a) For Course “W” with an odd number of legs and Course “O”, the finish line will be located approximately 0.1 NM to windward of the windward mark.
 - i) On a “W” course with an odd number of legs that has a long windward mark in use, the finish line will be to windward of the long windward mark.
- b) For Course “W” with an even number of legs and Course “K”, the finish line will be located approximately 0.1 NM to leeward of the leeward mark or gate and the finishing mark will be on the opposite side of the Race Committee signal vessel from the starting mark. See diagrams in SI Addendum

B1.2.

B4.2 The Race Committee vessel at the finish may or may not be the same vessel that started the race.

SAILING INSTRUCTIONS

ADDENDUM C – NYYC PRIMARY RACE AREAS

