



# ROBERT H. TIEDEMANN CLASSICS REGATTA

## Newport, Rhode Island

### June 27-28, 2026

### **SAILING INSTRUCTIONS incorporating AMENDMENT 1 *(in red)***

The notation '[NP]' in a rule of the sailing instructions (SIs) means that a boat may not protest another boat for breaking that rule. This changes RRS 60.1.

#### **1 RULES**

- 1.1 The regatta will be governed by the rules as defined in the *The Racing Rules of Sailing* (RRS), including the current NYYC Classics Rules incorporating the current CRF rating.
- 1.2 The prescription to RRS 63.1 is deleted.
- 1.3 For boats competing in the Classic Yachts Challenge Series, the Notice of Series will apply.
- 1.4 All competing boats shall carry a handheld VHF radio for safety purposes and Race Committee communication.
- 1.5 The following documents shall apply and will be posted as addenda on the Tiedemann Classics Regatta website:
  - a) Addendum 1 – The NYYC Classics Rules
  - b) [NP] Addendum 2 – US Safety Equipment Requirements (USSER)
    - All boats shall minimally comply with the US Nearshore section of the USSER and shall comply with their class rules, where applicable.
    - Rule 40.1 shall apply to boats not rigged with lifelines and crew shall wear approved PFDs at all times while racing. Rule 40.1 will not apply to boats of the 12 Metre class unless the Race Committee has displayed Code Flag Y. This changes Notice of Race 1.3(b).
    - In the event of a conflict between these Requirements and applicable class rules, the class rules shall apply.

#### **2 COMMUNICATION: NOTICES, ANNOUNCEMENTS, VHF CHANNELS**

- 2.1 Notices to competitors will be posted on the Official Notice Board located on the event [website](#) and may also be posted at the New York Yacht Club Harbour Court Sailing Center.
- 2.2 Any change to the sailing instructions will be posted before 0900 hours, or no later than 15 minutes before the removal of flag AP when displayed ashore, on the day it will take effect, except that any change to the schedule of races will be posted by 2000 hours on the day before it will take effect.
- 2.3 In addition to the signals made in SI 3.3, the Race Committee will confirm the rendezvous location as described in SI 6 **two hour prior to the scheduled first warning signal** over VHF Channel 72. The failure to make this announcement or for a boat to hear this announcement will not be grounds for a boat to request redress. This changes RRS 61.4(b)
- 2.4 After the rendezvous locations and any other regatta announcements have been made, Race Committee signal vessels will monitor and communicate with their respective classes on the following circle VHF channels:
  - Green Circle VHF Channel 72
  - Red Circle VHF Channel 69

### 3 SIGNALS MADE ASHORE

- 3.1 Flag signals will be flown from the western yardarm of the flagpole at Harbour Court.
- 3.2 When flag AP is displayed ashore, “1 minute” is replaced with “not less than 60 minutes” in race signal AP. This changes RRS Race Signals.
- 3.3 Signals designating the rendezvous locations for all circles will be displayed **two hours prior to the warning signal** each race day from the western yardarm of the flagpole at Harbour Court.

### 4 SCHEDULE OF EVENTS

- 4.1
- | <u>Date</u>       | <u>Time</u>          | <u>Event</u>   |
|-------------------|----------------------|--|
| Friday, June 26   | 1600-1800            | Registration at NYYC Sailing Center  |
| Saturday, June 27 | 0800-0930            | Registration at NYYC Sailing Center  |
|                   | <del>1400</del> 1200 | First Warning Signal for all classes   |
|                   | 1800/1900            | Cocktails/Regatta Dinner   |
| Sunday, June 28   | 1100                 | First Warning Signal for Herreshoff H Class  |
|                   | TBD                  | First Warning Signal for the first boat in the CRF PURSUIT Race<br>- Start times will be distributed for each boat by 2100 on Saturday evening |
|                   | After Racing         | Prize Giving at NYYC   |
- 4.2 For the CRF Classes: up to four (4) races are planned. For the One-Design Classes: multiple races are planned.
- 4.3 When more than one race will be held on the same day, the warning signal for each succeeding race will be made as soon as practicable.
- 4.4 On the final day of the regatta, no warning signal will be made after 1500 hours.

### 5 CLASS, CIRCLE ASSIGNMENTS AND CLASS FLAGS

- 5.1 The OA will divide boats into classes. Classes will be assigned a numeral or alphabetic designation.
- 5.2 [NP] Class Flags: Unless indicated on the scratch sheet, each boat shall display the numeric, alphabetic or class flag corresponding to her class designation, as shown on the scratch sheet, from her backstay approximately six feet above the deck from the warning signal for the first class on her circle until she is no longer racing. Boats without a permanent backstay shall conspicuously display these flags in an alternate position in the aft part of the boat.

### 6 RENDEZVOUS

- 6.1 Circle rendezvous locations are listed below and will be designated as described in SI 2.3 and SI 3.3. See SI Addendum C – NYYC Primary Race Areas.

#### **Rhode Island Sound:**

- Area “A” -in the vicinity of 160° M and 1.2 NM from R “2” QR Whistle marking Brenton Point

#### **Newport Harbor and near Newport Bridge:**

- Area “K” -between Goat Island and Rose Island
- Area “M” -in the vicinity of R “12” west of Rose Island
- Area “O” -in the vicinity of Potter Cove (just north of west end of the Newport Pell Bridge)
- Area “G” -in the vicinity of the south end of Gould Island

#### **North of Newport Bridge:**

- Area “R” -in the vicinity of 200° and 0.5 NM from Halfway Rock
- Area “T” -in the vicinity of G “7” QG off Quonset Point

- 6.2 Once on station, the Race Committee may announce the lat/long positions of the signal vessel and starting mark over the circle VHF channel. Failure to make such an announcement, or the timing of any announcement, shall not be grounds for a boat to request redress. This changes RRS 61.4(b)(1).

### 7 [NP] CHECK-IN AND RETIREMENT

- 7.1 **Check-in on Land:** Each yacht shall check in at the registration desk at the NYYC Sailing Center at Harbour Court during the registration times so designated in the notice of race.
- 7.2 **Check-in on Water:** Prior to the warning signal for the first race, each boat shall check in with the Race Committee signal vessel in their rendezvous area by passing astern and announcing their sail number. On Sunday, boats participating in the pursuit race do not need to check in.

7.3 Boats retiring shall inform the Race Committee on their circle VHF channel or by calling the NYYC Sailing Office at (401) 845-9633 as soon as reasonably possible.

## 8 COURSES AND MARKS

The courses and marks for the Tiedemann Regatta are described in the SI Appendices as shown:

Courses using Government Marks	SI Addendum A
Drop Mark Courses	SI Addendum B

## 9 THE START

- 9.1 The starting line will be between a staff displaying an orange flag on the Race Committee signal vessel and either a staff displaying an orange flag on the port-end Race Committee vessel or the course side of the port-end starting mark as described in the relevant SI Addendum.
- 9.2 A boat starting later than five minutes after the starting signal will be scored DNS. This changes RRS A5.
- 9.3 The Race Committee will endeavor to hail boats observed to be OCS at the start over the stated VHF channel. Failure to hail, the timing or order of any such hails, will not be grounds for a boat to request redress. This changes RRS 61.4(b)(1).

## 10 CHANGE OF COURSE

See Addendum B – Drop Mark Courses.

## 11 THE FINISH

- 11.1 The finishing line will be between a staff displaying a blue flag on a Race Committee vessel and the course side of the finish mark as described in the relevant SI Addendum.
- 11.2 The same Race Committee vessel may or may not start and finish each race.

## 12 PENALTY SYSTEM

- 12.1 For the CRF Classes: For a breach of a rule of Part 2, a boat may take a scoring penalty in accordance with RRS 44.3 at the time of an incident.
- 12.2 For the **Herreshoff H Class**:
- The first sentence of RRS 44.1 is changed as follows: “A boat may take a One-Turn Penalty when she may have broken one or more rules of Part 2 in an incident while *racing*.”
  - Appendix V2 applies.
- This changes NOR 9.2.
- 12.3 The Protest Committee may impose suitable penalties, other than disqualification, for breaches of the USSER or other non-Part 2 rules. This changes RRS 60.5(c).
- 12.4 A boat that has taken a penalty shall complete an online penalty acknowledgement form no later than the end of the protest time limit.

## 13 TIME LIMITS

- 13.1 For courses designated in accordance with SI Addendum A that are not a pursuit race, the Time Limit for the first boat to sail the course and *finish* is four (4) hours and the Finishing Window is 90 minutes. Boats **still racing** but failing to sail the course within the Finishing Window, and not subsequently retiring, penalized or given redress, will be scored Time Limit Expired (TLE) without a hearing. A boat scored TLE shall be scored points as described in SI 15.2. This changes RRS 35, A5.1, A5.2 and A10.
- 13.2 For courses designated in accordance with SI Addendum B, the Time Limit for the first boat to sail the course and *finish* is two (2) hours and the Finishing Window is 30 minutes. Boats failing to sail the course within the Finishing Window, will be scored Did Not Finish (DNF) without a hearing. This changes RRS 35, A5.1, and A5.2.
- 13.3 The Time Limit for a pursuit race will be communicated to competitors when the start times are distributed for that race.

## 14 PROTESTS AND REQUESTS FOR REDRESS

- 14.1 The intent to file a protest and the identity of the boat being protested shall be communicated to the Race Committee at the first reasonable opportunity after the boat intending to protest finishes until acknowledged by the Race Committee. This changes RRS 60.2(a)(1).

- 14.2** Written protests or requests for redress shall be submitted through the online hearing request form, located on the regatta webpage, as soon as possible, but not later than one hour after the Race Committee signal vessel for that circle has docked. This time limit for filing a hearing request for each circle will be posted on the online Official Protest Committee Notice Board located on the event [website](#).
- 14.3** Hearings will be conducted as soon as possible and in order of receipt.
- 14.4** On the last scheduled day of racing, a request for redress based on a protest committee decision shall be submitted through the online form no later than 30 minutes after the decision was posted.
- 14.5** On the last scheduled day of racing, if no races are held, an online request for reopening a hearing shall be delivered within one hour after racing has been abandoned. This changes RRS 63.7.

## **15 SCORING**

- 15.1** One race is required to be completed to constitute a series. When fewer than six (6) races have been completed, a boat's series score will be the total of her race scores. When six (6) or more races have been completed, a boat's series scores will be the total of her race scores excluding her worst score.
- 15.2** A boat scored Time Limit Expired (TLE) by the Race Committee shall be scored points for the finishing place two more than the points scored by the last boat that finished within the Finishing Window stated in SI 13.1. This changes RRS 35, A5.1, A5.2 and A10.

## **16 PRIZES**

- 16.1** Awards shall be provided to the top boats in each class. Additional trophies may be given at the discretion of the OA.
- 16.2** The Don Glassie Award will be presented to a classic boat which best exemplifies the spirit and passion that led Glassie to found the regatta.
- 16.3** Other trophies may be awarded at the discretion of the Organizing Authority.

## **17 WAIVER AND RELEASE OF LIABILITY**

- 17.1** As a condition of entry, each owner, skipper and participating crew member shall submit, prior to racing, an online liability waiver/media release. The links to both forms can be found on the event [website](#).
- 17.2** Media Waiver - Competitors and crew members on the competing boats grant, at no cost, the New York Yacht Club Regatta Association, Inc., New York Yacht Club, and any official sponsors of the regatta, the absolute right and permission to use their name, voice, image, likeness, biographical material as well as representations of the boats in any media worldwide (being television, print and internet media), including video footage, for the sole purposes of advertising, promoting, reporting and disseminating information regarding the Tiedemann Regatta and the participants in the Tiedemann Regatta.
- 17.3** Competitors participate in the regatta entirely at their own risk. See RRS 3, Decision to Race. The Organizing Authority, New York Yacht Club, and any official sponsors will not accept any liability for material damage or personal injury or death sustained in conjunction with or prior to, during, or after the regatta. Attention is also drawn to RRS 46 and USSER 1.2, Responsibility.

## **18 SAFETY REGULATIONS**

- 18.1** Restricted Channels: Competitors are reminded that Narragansett Bay and its approaches are considered restricted channels for commercial traffic and other vessels restricted in their ability to maneuver. Competitors must comply with the government right-of-way rules when in proximity to commercial or privileged marine traffic.
- 18.2** Newport Security Zone: In the event there is racing in Narragansett Bay, competitors should be aware of heightened security around the Navy base in Newport just to the north of the Newport Jamestown Bridge. The area may be defined by a series of white buoys marking the Newport Security Zone along the coast of the Naval Facilities from Coasters Harbor to the breakwater at the north end of Coddington Cove and the line defined by the buoys shall rank as an obstruction. Yachts shall not enter this area. A Navy patrol boat monitors the area and vessels navigating in the Exclusionary Zone may face action by Coast Guard and Naval authorities.
- 18.3** Additional Restricted Areas: There may be additional restricted areas due to Navy activity, shipping or fishing operations that may be described in an amendment to the sailing instructions.

**19 NOTES**

For further information please contact:

**Regatta Website:** <https://nyyc.org/2026-tiedemann-classic-regatta>

**New York Yacht Club Regatta Association**

NYYC Sailing Office, 5 Halidon Avenue, Newport, RI 02840

401-845-9633

401-846-3303 fax

[sailingoffice@nyyc.org](mailto:sailingoffice@nyyc.org)

© Copyright New York Yacht Club 2026. All Rights Reserved. *New York Yacht Club; NYYC; Harbour Court, club burgee; certain other logos and marks are trademarks or registered trademarks of the New York Yacht Club in the United States and other countries. All Rights Reserved. Use is prohibited without written permission of the Secretary of the New York Yacht Club*

# SAILING INSTRUCTIONS

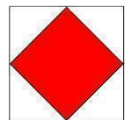
## **ADDENDUM A – COURSES USING GOVERNMENT MARKS**

### **A1 ORDER OF START**

The intended order of start will be announced on the VHF Channel. Classes may or may not be started in numerical order. The Race Committee may combine two or more classes into one start by displaying multiple class flags at the warning signal. The Race Committee will endeavor to announce the next class(es) to start on the VHF Channel described in SI 2.4.

### **A2 COURSES**

- A2.1** All boats shall pass through the center span only for any course passing under the Jamestown Verrazano Bridge and/or the Newport Pell Bridge, in which case the center span bridge piers define a gate mark.
- A2.2** Government marks shall have no required side except when designated as a rounding mark.
- A2.3** No later than the warning signal, the Race Committee will display on a board the course to be sailed. The Race Committee will endeavor to announce the designated courses over the VHF channel. Failure to make such an announcement shall not be grounds for a boat to request redress. This changes RRS 61.4(b)(1).
- A2.4 COURSE 1** – If number one is displayed, the course will be designated using buoys as described in SI Addendum A3. The Race Committee will list the marks in the order to be rounded and the required side to leave each mark. The course will be:
- Start
  - Round the marks in the designated order leaving each mark to the designated side.
  - Finish between a staff displaying the blue flag on the Race Committee vessel and the nearby finishing mark. Note that the intended finishing line will be set at the starting location of the Race Committee signal vessel opposite the start line.
- A2.5 COURSE 2** – If number two is displayed, the course will be designated using buoys as described in SI Addendum A3. The Race Committee will list the marks in the order to be rounded and the required side to leave each mark. The course will be:
- Start
  - Round the marks in the designated order leaving each mark to the designated side
  - Finish between a staff displaying the blue flag on a Race Committee vessel and the nearby finishing mark. The intended finishing line will be a separate line set approximately .2 to starboard of the anchored Race Committee signal vessel. The Race Committee signal vessel will remain anchored at the location of the start.
- A2.6** If at the start, Flag F is displayed on a separate pole, the finishing line will be between a staff displaying a blue flag on a Race Committee vessel and the nearby finishing mark in the vicinity of 1NM at a bearing of 310° from the Fl R 6 sec Horn “2” on the northern point of Fort Adams



### **A3 MARKS**

- A3.1** The starting mark will be a green inflatable buoy.
- A3.2** The finishing mark will be a pink inflatable buoy.
- A3.3** Special Marks “E” and “L”, if used, will be the same as the original mark colors described in SI B2.1.
- A3.4** If used, Special NYYC Temporary Inflatable Race Marks 16, 17, O2, N2 and TB2 as designated on the current South Bay Race Chart, will be orange tetrahedron buoys.
- A3.5** All buoys listed on the current *South Bay Race Chart* provided at registration may be used in Course 1 and Course 2. In addition, the marks listed in SI Addendum A3.6, A3.7 and A3.8 are additional rounding marks that might be used.

**A3.6** Special Mark “E”

- a) The Race Committee may add a new first mark “E” to any course described in SI Addendum A2.
- b) If special mark “E” is used, the Race Committee will list “E” along with the designated rounding side as the first mark on the course board as described in SI A2.1.
- c) The magnetic bearing and distance (in nautical miles to the nearest tenth) to special mark “E” will be posted on a board on the Race Committee signal vessel.

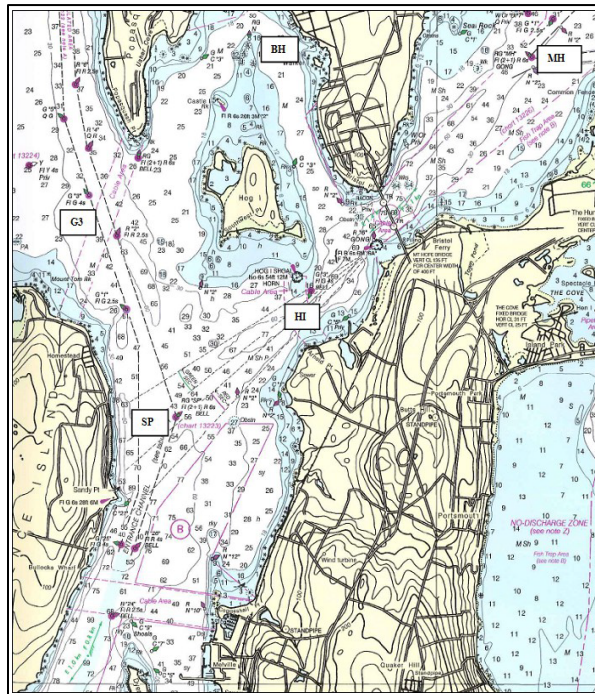
**A3.7** Special Mark “L”

- a) The Race Committee may set special mark “L” approximately 0.1 NM to windward of the start line.
- b) If special mark “L” is used, it will be listed as a mark as described in SI Addendum A2.1.

**A3.8** **GOVERNMENT MARKS AND ISLANDS**

See charts 13205, 13218, 13223, 13226 and 13224 for more detail.

<u>Description</u>	<u>Approx. location</u>
1 Gould Island	41° 32.00' N; 071° 20.67' W (center of island)
3 Hope I (east of Quonset) including R “2” at the southwest end and G C “1” at the northeast end	
4 Conanicut Island	
5 RW “NB” Mo(A) WHIS	41° 23.00' N; 071° 23.36' W
7 R “2” Fl R 4s WHIS south of Point Judith	41° 18.46' N; 071° 28.35' W
1BI G “1 BI” Fl G 4s BELL north of Block I	41° 15.49' N; 071° 34.55' W
M Block Island including:	
R “4” Fl R 6s WHIS off southwest Pt	41° 08.73' N; 071° 37.35' W
Black Rock Pt. Buoy 2	41° 08.42' N; 071° 35.74' W
U Buzzards Light Tower Fl 2.5s 67ft 17M Horn	41° 23.82' N, 071° 02.08' W
PR Prudence Island including R “8” northwest of Patience Island and RG N at the northern end	
SP RG “SP” Fl (2+1) R 6s BELL	41° 36.92' N; 071° 17.59' W
G3 G “3” Fl G 4s (approx. 0.5 NM sw of Popasquash Neck)	41° 38.53' N; 071° 18.46' W
MH RGR “MH” Fl (2 +1) R 6s GONG in Mt. Hope Bay	41° 39.54' N; 071° 14.04' W
BH RGR n "Middle Ground Buoy" approx. 0.8 NM n of Hog I	41° 39.68' N; 071° 16.87' W
HI G “3” Fl G 4s BELL approx. 0.4 NM South southeast of Hog I	41° 37.79' N; 071° 16.29' W
DI Dutch Island	41° 30.19' N; 071° 24.04' W (center of island)



*Marks near Prudence Island, Bristol and Mt. Hope Bay*

# SAILING INSTRUCTIONS

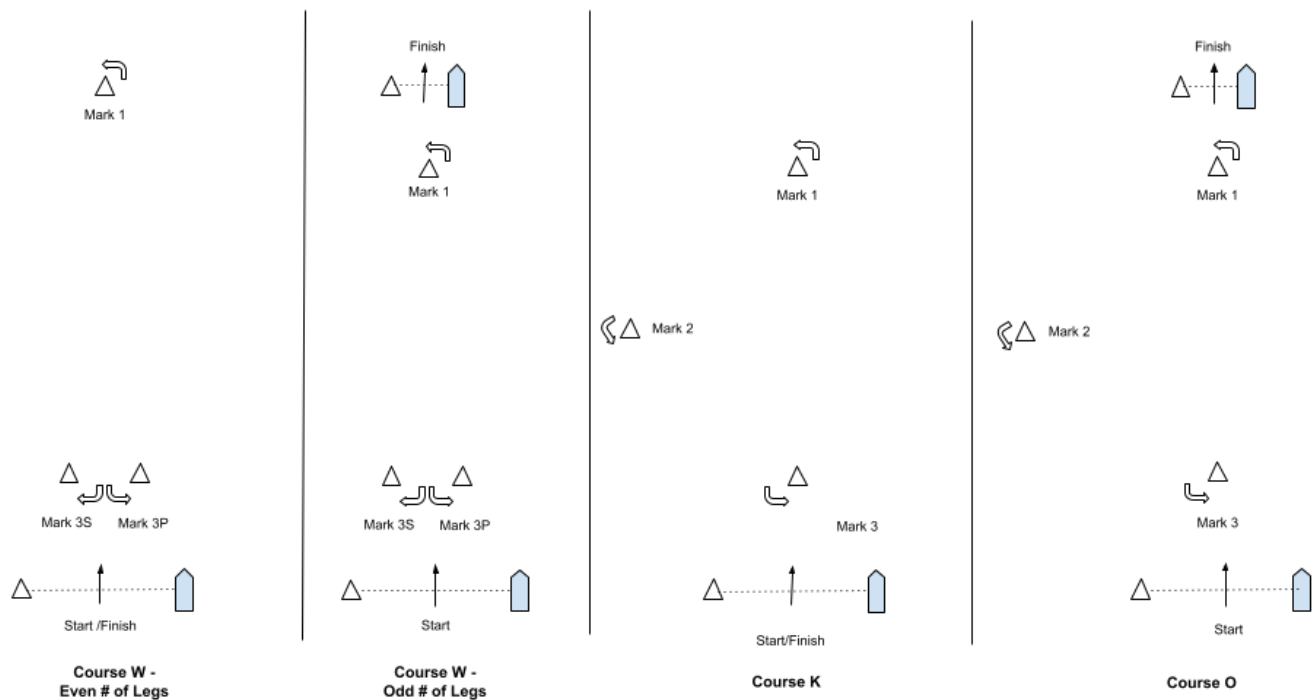
## ADDENDUM B – DROP MARK RACES

### B1 COURSES FOR DROP MARK RACES

**B1.1** The Race Committee signal vessel will signal the course on a course board. Course designations are as follows:

- W2 Start – 1 – Finish (downwind)
- W3 Start – 1 – Gate (3S/3P) – Finish (upwind)
- W4 Start – 1 – Gate (3S/3P) – 1 – Finish (downwind)
- W5 Start – 1 – Gate (3S/3P) – 1 – Gate (3S/3P) – Finish (upwind)
- W6 Start – 1 – Gate (3S/3P) – 1 – Gate (3S/3P) – 1 – Finish (downwind)
- K Start – 1 – 2 – 3 – 1 – Finish (downwind)
- K2 Start – 1 – 2 – 3 – 1 – 3 – 1 – Finish (downwind)
- O Start – 1 – 2 – 3 – 1 – 3 – Finish (upwind)

**B1.2** Course Diagrams:



**B1.3** Course “W” is a Windward/Leeward course. A board indicating the number of **LEGS** to be raced will be shown next to the letter “W”.

**B1.4** Course “K” is a Triangle/Windward/Leeward course. **Course K2** is a Triangle/Windward/Leeward/Windward/Leeward course.

**B1.5** Course “O” is a Triangle/Windward/Leeward/Windward course.

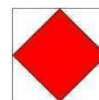
**B1.6** The leeward mark for Courses “W”, “O” and “K” will be an inflatable mark(s) set approximately 0.10 NM to windward of the starting line. A gate mark 3S/3P may be used for Course “W”.

**B1.7** The course designations, distance and bearing to the windward mark will be displayed on a board.

**B1.8** Marks shall be rounded in order and always left to port, except that a gate, when used, shall be rounded as described in Definitions, Sail the Course paragraph (b)(3). In the event a gate is not set, the single leeward mark shall be rounded to port.

**B1.9 Special Finish Mark “F”**

If at the start, Flag F is displayed on a separate hoist, the finishing line will be between a staff displaying a blue flag on a Race Committee vessel and the nearby finishing mark in the vicinity of 1NM at a bearing of 310° from the Fl R 6 sec Horn “2” on the northern point of Fort Adams. This changes SI Addendum B1.1.



**B2 MARKS FOR DROP MARK COURSES**

**B2.1** Marks will be inflatable buoys as follows:

<u>Circle</u>	<u>Original marks</u>	<u>Starting</u>	<u>Finishing</u>	<u>Change marks</u>
GREEN	Orange	Green	Pink	
RED	Orange	Green	Green	Orange

**B3 COURSE CHANGE**

**B3.1** To change the next leg of the course, the Race Committee will move the existing mark (or finishing line).

**B3.2** The Race Committee may change the course by up to five degrees in bearing and/or 0.2 nm in length without a signal or change of mark color. This changes RRS 33.

**B3.3** In addition to the requirements in RRS 33, the Race Committee will attempt to announce any course change on their respective circle VHF channel. Failure to make such an announcement shall not be grounds for a boat to request redress. This changes RRS 61.4(b)(1).

**B4 THE FINISH**

**B4.1** The finishing line will be between a staff displaying a blue flag on a Race Committee vessel and the nearby finishing mark.

- a) For Course “W”, with an odd number of legs, and Course “O”, the finish line will be located approximately 0.1 NM upwind of the windward mark.
- b) For Course “W”, with an even number of legs, and Courses “K” and “K2”, the finish line will be located approximately 0.1 NM downwind of the leeward mark and the finishing mark will be on the same side of the Race Committee signal vessel as the starting mark. See diagrams in SI Addendum B1.2.

# SAILING INSTRUCTIONS

## ADDENDUM C – NYYC PRIMARY RACE AREAS

